

65 YEARS

100%
MADE IN
NZ

G
GILTRAP

GT8

GILTRAP

GT TRAILER

Operation and Parts Manual

Disclaimer

While every attempt has been made to ensure that information and diagrams in this manual are correct, Giltrap Engineering Limited will not be responsible for any damage or consequential loss arising out of misinterpretation or failure to follow recommended procedures; nor will it be liable for any damage caused by or arising out of modification or misuse of its product.

Printed March 2026

Copyright © 2026 by Giltrap Engineering Ltd.
Printed in New Zealand

All rights reserved. Reproduction or use, without express permission, of editorial or pictorial content, in any manner, is prohibited.

Table of Contents

1	Introduction	3
1.1	MANUAL EVALUATION.....	3
1.2	DELIVERY AND WARRANTY	3
2	Warranty.....	4
2.1	WARRANTY CLAIMS	5
3	General Safety	6
4	Pre-Service Guidelines & Settings	8
5	Maintenance	9
5.1	GREASING AND LUBRICATION SCHEDULE	9
6	Installation.....	11
7	Operation	12
7.1	SIDES – GT6, GT8, GT10	12
7.2	SIDES – GT14, GT17, GT20.....	14
7.3	STANDARD TAILGATE – GT6, GT8, GT10	15
7.4	SIDE SWING TAILGATE – GT6, GT8, GT10, GT14, GT17, GT20	16
7.5	HYDRAULIC JACK OPERATION.....	18
8	Parts.....	19
8.1	TRANSFERS AND LABELS.....	19
8.2	RIMA JACK	20
8.3	AXLE HUB – ADR.....	21
8.4	STANDARD DUTY TANDEM AXLE ASSEMBLY - GT6, GT8, GT10, GT14	23
8.5	HEAVY DUTY TANDEM AXLE ASSEMBLY - GT17, GT20.....	25
8.6	HYDRAULIC RAM MULTISTAGE – GT6, GT8, GT10	26
8.7	HYDRAULIC RAM MULTISTAGE – GT14, GT17, GT20	27
8.8	QUICK HITCH STAND - GT6, GT8, GT10.....	28
8.9	QUICK HITCH STAND – GT14, GT17, GT20.....	29
8.10	TAILGATE	30
8.11	SIDES, STANCHIONS, HEADBOARD – GT6, GT8, GT10	31
8.12	SIDES, STANCHIONS, HEADBOARD – GT14, GT17, GT20	32
8.13	TAILGATE RELEASE PULLEY	33
8.14	HYDRAULIC TAILGATE RELEASE.....	33
8.15	HYDRAULIC HOSE ASSEMBLY	34

1 Introduction

Thank you for purchasing a Giltrap product. Giltrap Engineering Ltd has enjoyed a long-standing success with their machinery. We would like you to enjoy the benefits of owning a Giltrap too. By following the guidelines laid out in this book, you will ensure trouble free, low maintenance operating for years.

Giltrap Engineering Ltd is a progressive company which continually strives to satisfy your needs, so we welcome any feedback which you can provide to help us improve our products and services and to ensure that they perform to your expectations. Any constructive comments about this operator's manual are also welcome.

Your machine has been designed to perform its task efficiently and with a minimum of maintenance. This handbook provides safety guidelines, instructions, maintenance requirements and parts listings. We recommend that you read the entire handbook, before operating the machine as this will enable you to take full advantage of your new machine's considerable potential.

1.1 Manual Evaluation

We update our operating manuals regularly. Your suggestions for improvement help us to create even more user-friendly manuals. Send your suggestions by email to admin@giltrapag.co.nz.

1.2 Delivery and Warranty

Before you begin to use your machine, please check it to make sure there is no delivery damage. If damage is evident, contact the dealer who supplied the machine so that they can make the appropriate claims.

If you have any other queries, please contact your dealer or Giltrap Engineering Ltd

All Giltrap products are covered by a 24-month warranty on parts and labour, subject to normal use.

Please fill in the details below for future reference

Model:

Serial Number:

Delivery Date:

Dealer:

2 Warranty

The Goods specified in the Price List as designed and supplied by Giltrap Engineering Ltd are warranted against faulty workmanship and defective materials for a period of 24 months from the date of purchase. In addition to the primary 24 month warranty for Giltrap products, there is a further 12 month structural warranty for the goods, against faulty workmanship and/or defective materials for structural items only. The structural warranty does not apply to electronics or component parts.

Such warranty is subject to the following conditions:

1. This warranty covers the repair or replacement of parts or machinery sold by the manufacturer and damaged as a result of the faulty workmanship or materials in such parts or machinery. It does not extend to any other loss or damage including consequential loss or damage or loss to other property or persons.
2. Without limiting the generality of paragraph 1 above, this warranty does not cover the following:
 - (a) Travel expenses.
 - (b) Damaged caused by accident, misuse or abuse.
 - (c) Damage to any goods which have been altered or modified by someone other than the manufacturer or its authorised agent.
 - (d) Damage or loss to the goods due to their unsuitability for any particular use or for using with any particular tractor except where such use or tractor had been specifically approved by the manufacturer.
 - (e) Damage or loss where the fitting and installation of the goods were not carried out by the manufacturer or its authorised dealer.
3. Procedure for recovery under warranty.

No loss or damage will be covered by this warranty unless the loss or damage is reported immediately to the dealer (who will contact the distributor who will advise whether it is covered by the warranty and undertake the necessary action).

No warranty repair work is to be undertaken prior to an order number being obtained.

This warranty shall be interpreted according to the laws of New Zealand and the parties agree to submit to the jurisdiction of the Courts of New Zealand.

2.1 Warranty Claims

If you wish to make a claim under warranty:

Immediately stop using the machine.

List details of the machine and damaged item including serial numbers and date of purchase.

Consult with your Giltrap dealer (supplier) and have him forward your claim and the damaged item to Giltrap Engineering Ltd.

No warranty to be undertaken unless an order number is obtained from the Seller (Giltrap Engineering Ltd) prior to any work being done.

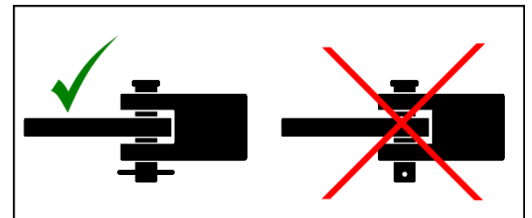
3 General Safety

For the safety of others and yourself, please read and follow the precautions in this operator's manual. Pay particular attention to the following safety aspects of operating machinery.

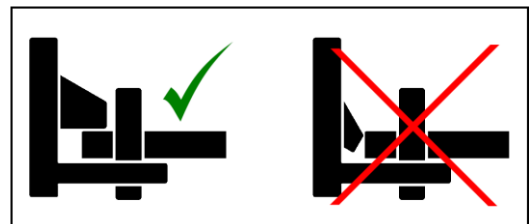
Do not ride on or allow passengers on the machine.



Always use a recognised hitch pin with a safety clip to hook trailed implements on behind the tractor.



Always ensure when using a quick hitch that the locking tab has come out and is in the locked position before moving.



Do Not operate tractor – trailer combination outside of manufacturers recommended drawbar loading.

Carry a suitable fire extinguisher.

A fire can ignite under certain conditions, so please take the following precautions:

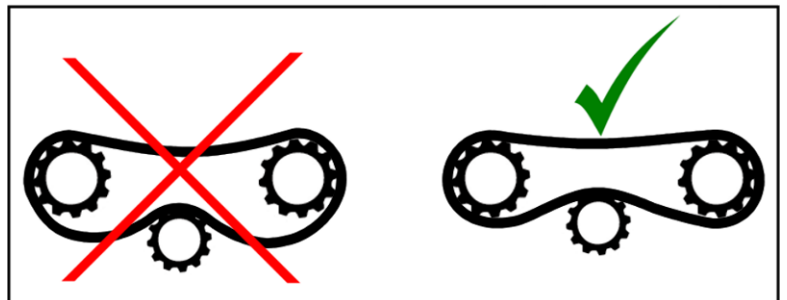
- After running your machine for a short time, check for defective bearings. A faulty bearing can become very hot, eventually discolouring, requiring immediate replacement.
- Do not allow combustible material to accumulate inside guards or around rollers and other moving parts.
- If your machine becomes blocked, stop immediately and remove the obstruction.
- Be careful when operating in hot or dry conditions or on extreme fire risk days.



Never operate your machine without the safety guards in place.



All chains should be properly adjusted and replaced when necessary.



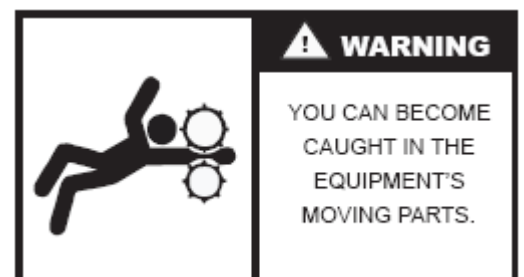
Release all hydraulic pressure from implements before commencing service work. Never look for suspected oil leaks with your hands or body - use a piece of cardboard instead.



Any fluid that penetrates the skin will have to be removed immediately by a medical expert. Seek specialist advice on this type of injury.

Never attempt to unblock equipment while it is still operating.

Always disengage power take-off, hydraulics and shut down engine before removing materials, checking or servicing.



Failure to follow these precautions is likely to result in serious injury.

Wear proper protective clothing. Loose attire can easily be snagged by rotating machinery resulting in serious injury or death.



4 Pre-Service Guidelines & Settings

Prior to delivering your machine, your dealer should have completed a pre-delivery check.

It is required to check the following points before using the machine for the first time.

- CHECK ALL WHEEL NUTS ARE SUFFICIENTLY TIGHT.

Wheel Nut Recommended Torque Settings		
M18 Stud	200 ft/lbs or 270Nm	
M20 Stud	280 ft/lbs or 380Nm	
M22 Stud	330 ft/lbs or 450Nm	

- CHECK ALL TYRE PRESSURES ARE CORRECT.

Recommended Tyre Pressures			
11.5/80-15.3	58psi	4.0 bar	
400/60-15.5	50psi	3.5 bar	
15.0/70-18	45psi	3.1 bar	
400/55-22.5	46psi	3.2 bar	
500/45-22.5	35psi	2.4 bar	
500/60-22.5	35psi	2.4 bar	
560/45R22.5	58psi	4.0 bar	
560/60R22.5	58psi	4.0 bar	
650/55R26.5	58psi	4.0 bar	

- CHECK ALL AXLE MOUNTING BOLTS AND NUTS ARE SUFFICIENTLY TIGHT.

Axle Mounting Bolt Recommended Torque Settings		
M16	180 ft/lbs or 245Nm	
M20	355 ft/lbs or 480Nm	

- THERE ARE SEVERAL GREASE POINTS on all Giltrap trailers. Check the yellow label on the side of your machine to see how many grease points there are. You should fully grease everything before running it for the first time. See page 9 for greasing and lubrication details.

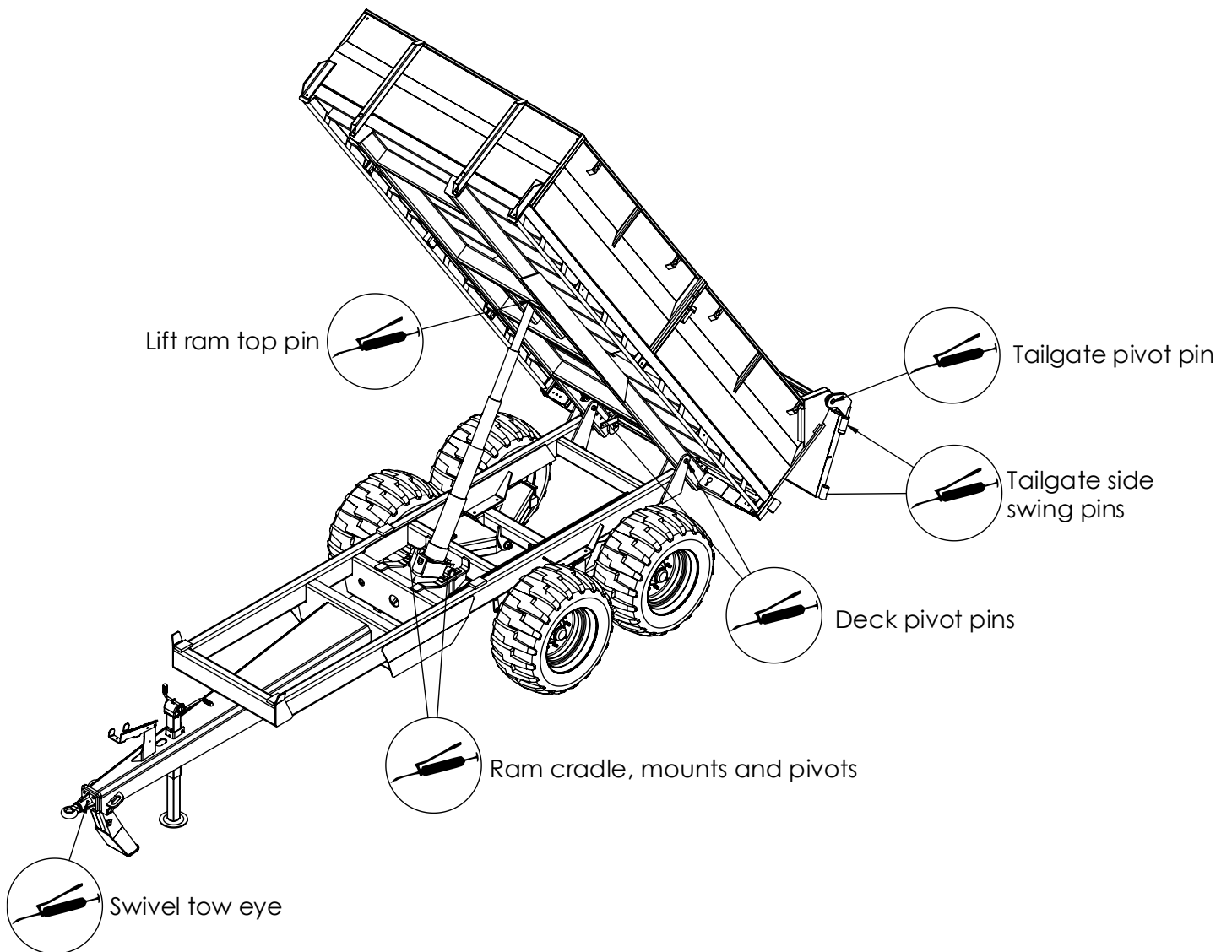
- CHECK AND RETIGHTEN WHEEL NUTS AFTER:
 - First use
 - First laden journey
 - The first 50 hours of use and every 50 hours thereafter

5 Maintenance

- Check the tyres regularly for the correct pressure
- Check all bolts etc. for tightness

5.1 Greasing and Lubrication Schedule

Location	Greasing Schedule
Axle Bushes	Every second day
Lift Ram Pivot	Weekly
Ram Cradle Mounts	Weekly
Lift Ram Top Pin	Weekly
Deck Pivot Pins	Weekly
Drawbar Pins	Weekly
Swivel Tow Eye	Weekly
Wheel Hubs	Every 3 months
Brake Rod	Every 3 months
Tailgate	Weekly



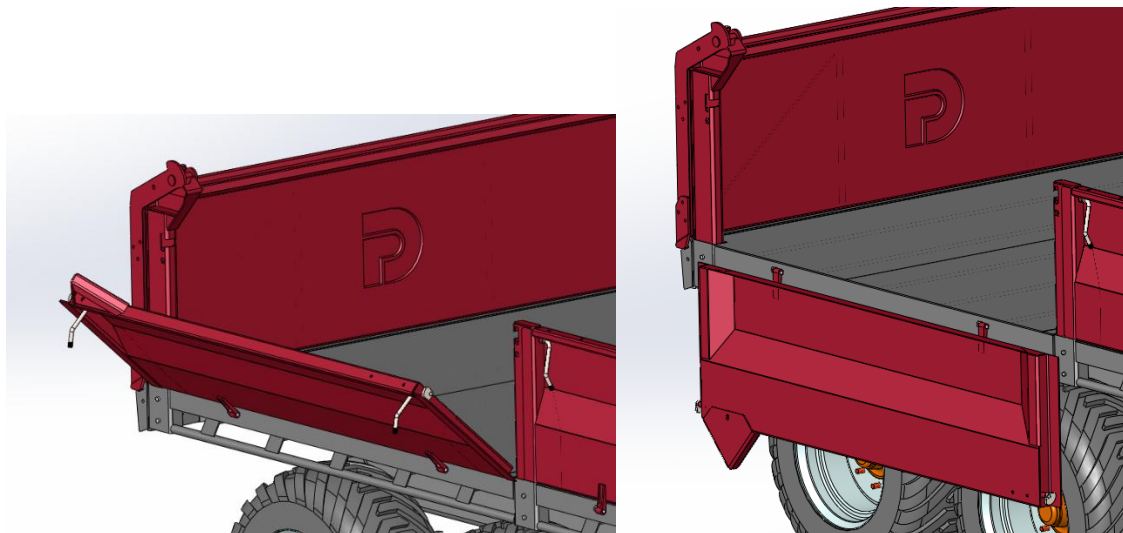
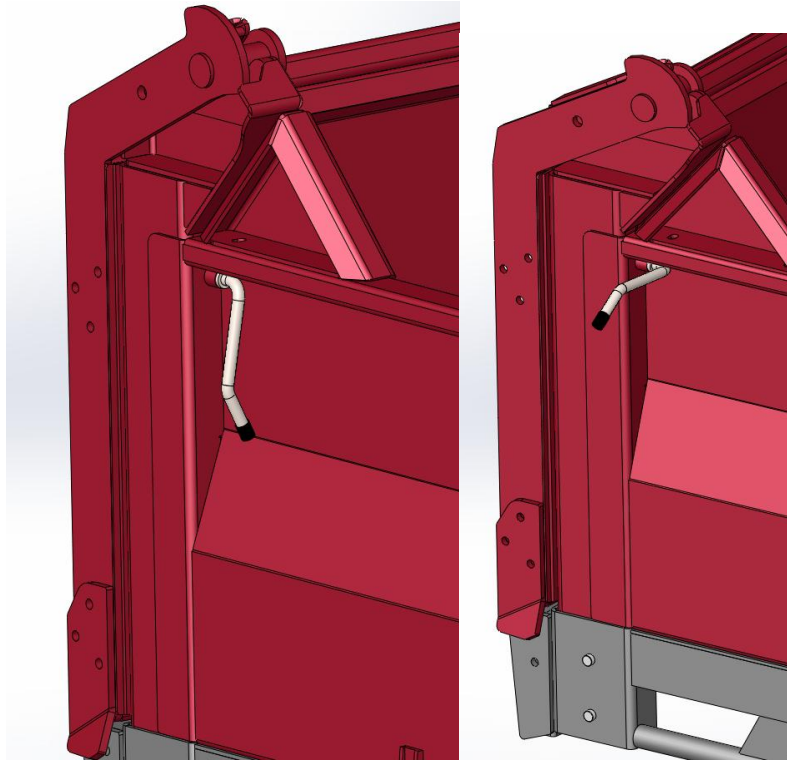
6 Installation

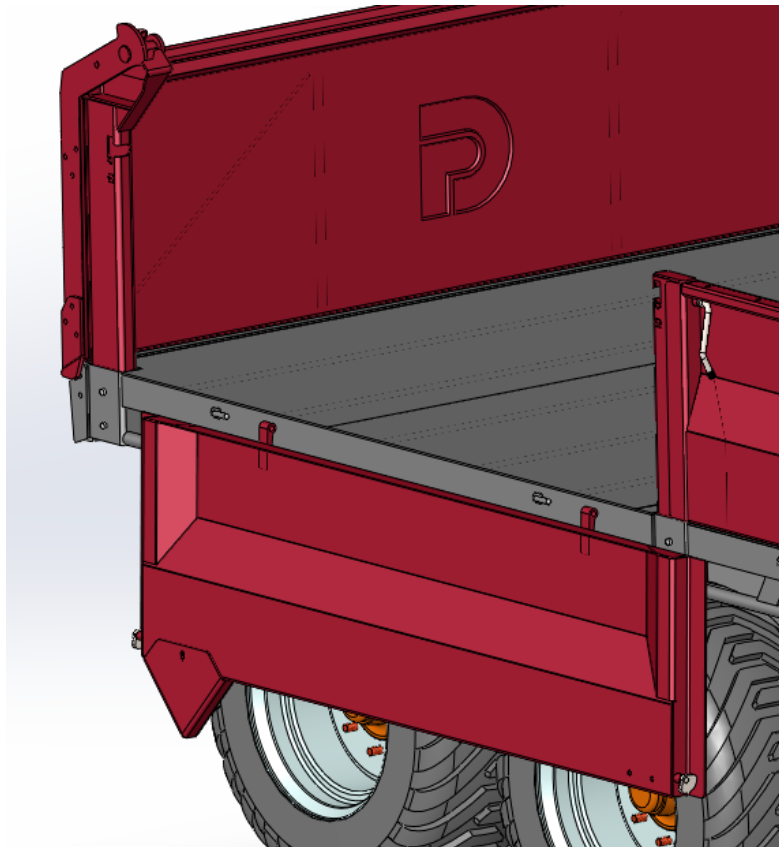
- Connect the trailer to the tractor drawbar. Ensure that the tractor drawbar is the correct height so that the trailer deck is close to horizontal.
- Check that there are no hydraulic leaks in the hoses and fittings
- Be aware of hazards and dangers before operating the equipment.
- Be sure that the tractor is the correct size in relation to the trailer.

7 Operation

7.1 Sides – GT6, GT8, GT10

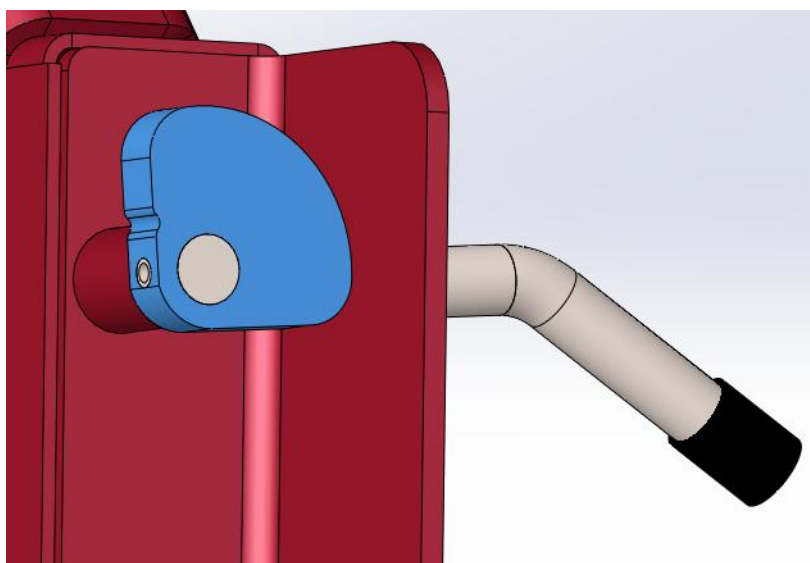
The GT6, GT8, and GT10 sides can all fold down and be removed. To achieve this, lift the two handles per side then fold the side down. It can then be slid off its hinges. Do not operate the trailer with the sides only folded down and not removed. Note where each side panel is removed from.





The stanchions (posts) can be removed by removing the pins holding them in place and then they can be slid out. Ensure all pins and retainers such as R clips are reattached upon reinstallation.

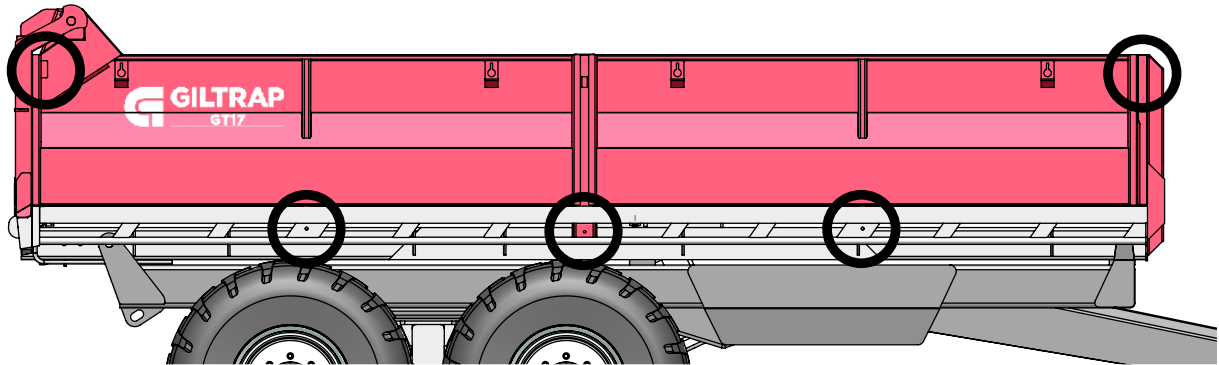
To reattach the sides, slide them back onto the hinges and fold them up. Ensure the cams (shown in blue) are inside the stanchions. Pull the handles down and ensure they are fully engaged before operating the trailer.



7.2 Sides – GT14, GT17, GT20

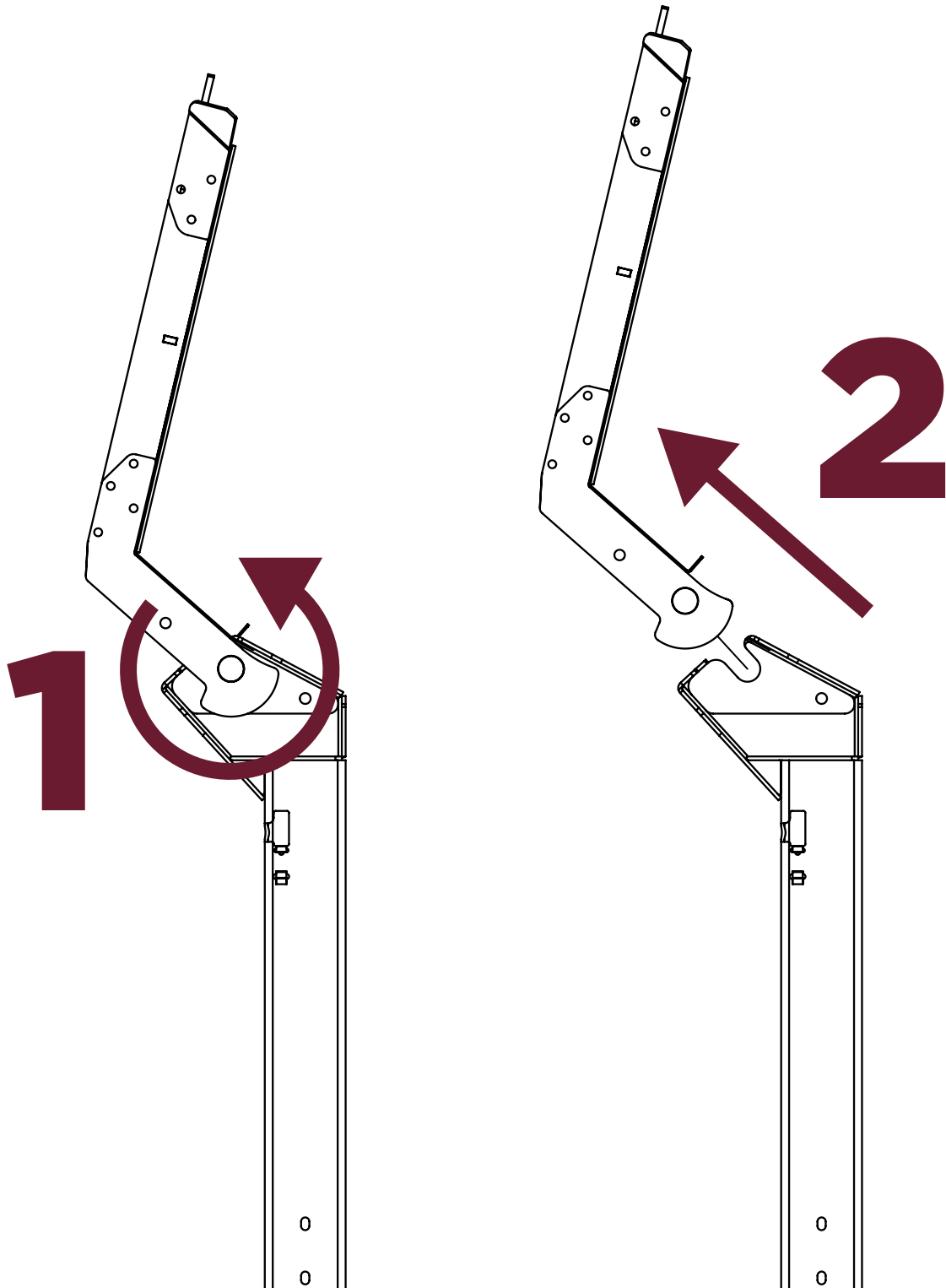
The GT14, GT17 and GT20 trailers have drop in sides. They are to be lifted out using chains attached to lifting eyes on each panel after removing all bolts and retaining pins (shown below). The front side panels can be removed separately to the back side panels. To remove the back side panels the tailgate must be removed first as described under 7.4.2 Side Swing Tailgate Removal.

ALL bolts must be tightened before any operation, including of swinging the tailgate.



7.3 Standard Tailgate – GT6, GT8, GT10

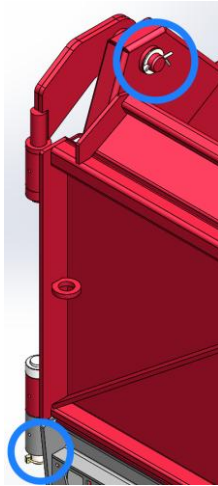
To remove the standard tailgate, tilt it approximately 170°. Slide it back then lift it out as shown:



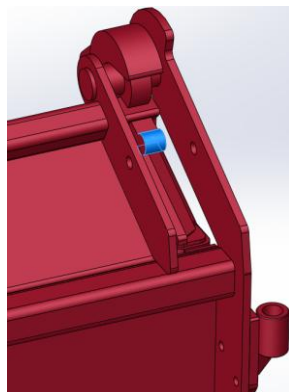
7.4 Side Swing Tailgate – GT6, GT8, GT10, GT14, GT17, GT20

7.4.1 Side Swinging Operation

Ensure both left-hand hinge pins are in position and secured with lynch pins or other supplied clips.



To open the side swing tailgate, lift the handle on the block lock as shown in blue:



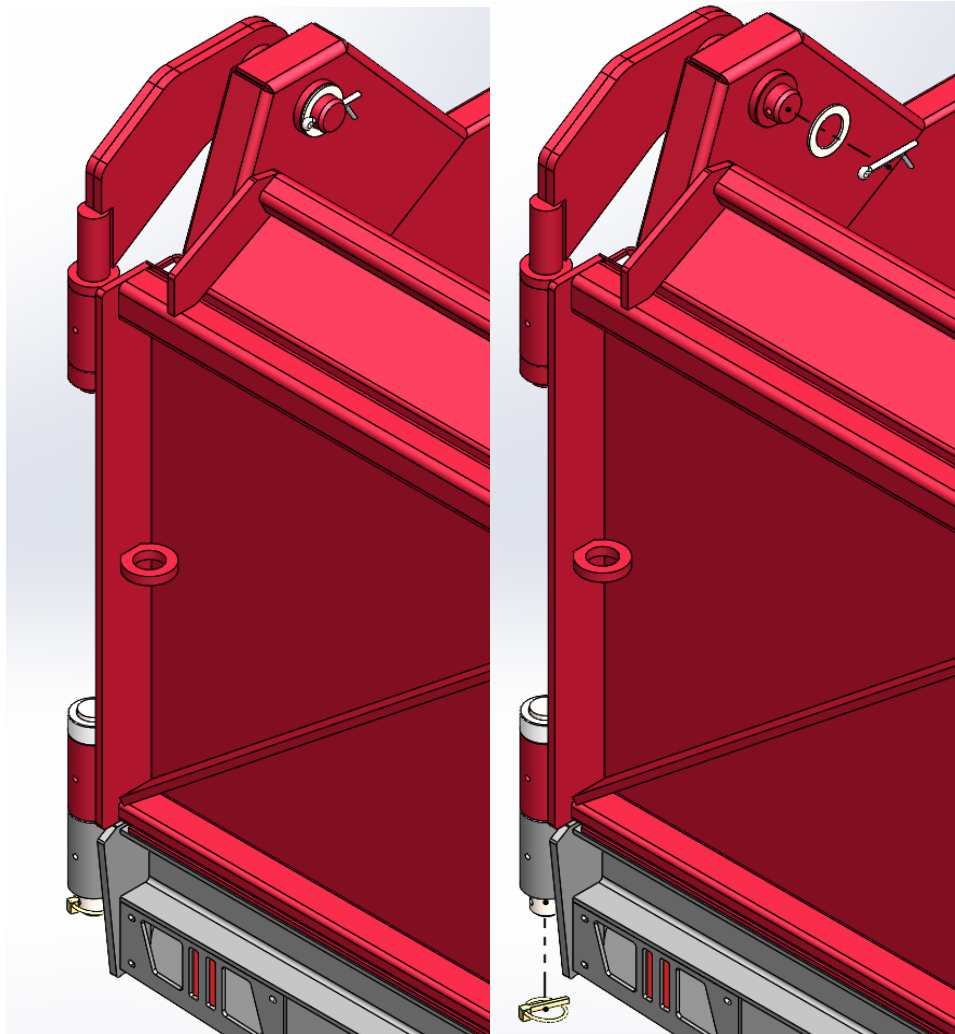
Swing the tailgate.

Warning: *The tailgate will drop slightly when it is no longer supported by the catch on the right hand side. Be mindful of this.*

Pin the tailgate fully open. Ensure any clips such as lynch pins are in place. Ensure all bolts and pins are secured holding the sides and stanchions are in place. To close the tailgate, do these steps in reverse. The tailgate will likely require a slight upwards push to close it back into the locking catch.

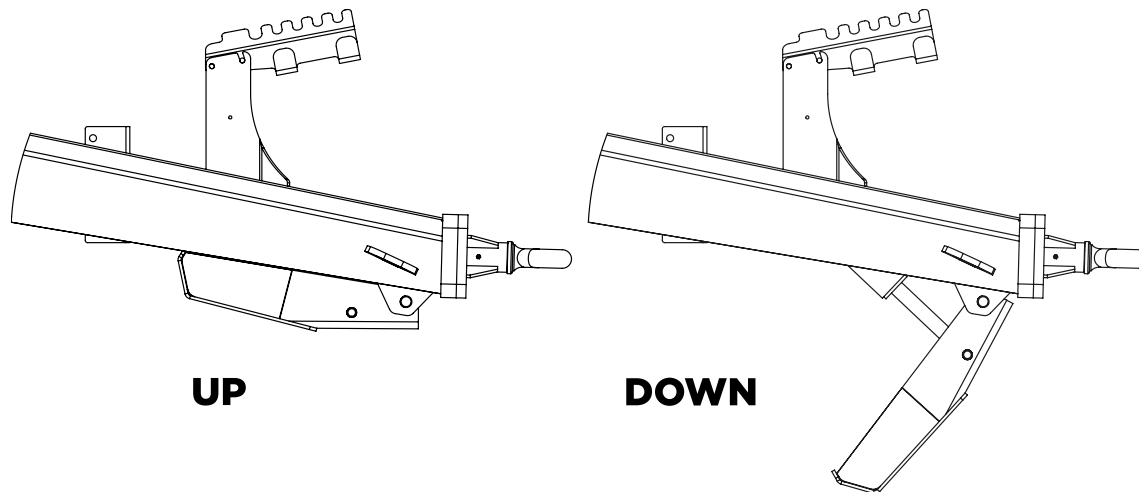
7.4.2 Side Swing Tailgate Removal

To remove the side swing tailgate from the trailer open the tailgate, and ensure it is supported by a lifting apparatus. Remove the retaining pins from the pivot pins and the washer as shown. Slide the pins out of the bushes. Reassemble in the opposite way, ensuring the washer and all lynch pins, R-clips or other retainers are replaced. If the retainer is a split pin, ensure it is replaced with a new one of the original size.



7.5 Hydraulic Jack Operation

The hydraulic jack (when fitted to a GT14, GT17 or GT20) is located underneath the front of the drawbar. In its folded-up position it may be used as a Quick Hitch foot. The height may be adjusted to provide the most convenient tow eye height.



To operate, connect the two jack hydraulic hoses to the tractor. Standing away from the drawbar (in case of movement), turn the on/off lever to point along the hose (On position). The jack height may now be adjusted using the tractor hydraulics.

When disconnecting the wagon, set the jack height as necessary and turn the on/off lever to 'Off' before disconnecting hoses.

Upon initial installation, air may be present in the hydraulic jack ram. This may be purged by cycling the jack from fully up to fully down a number of times.

8 Parts

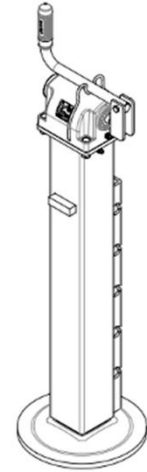
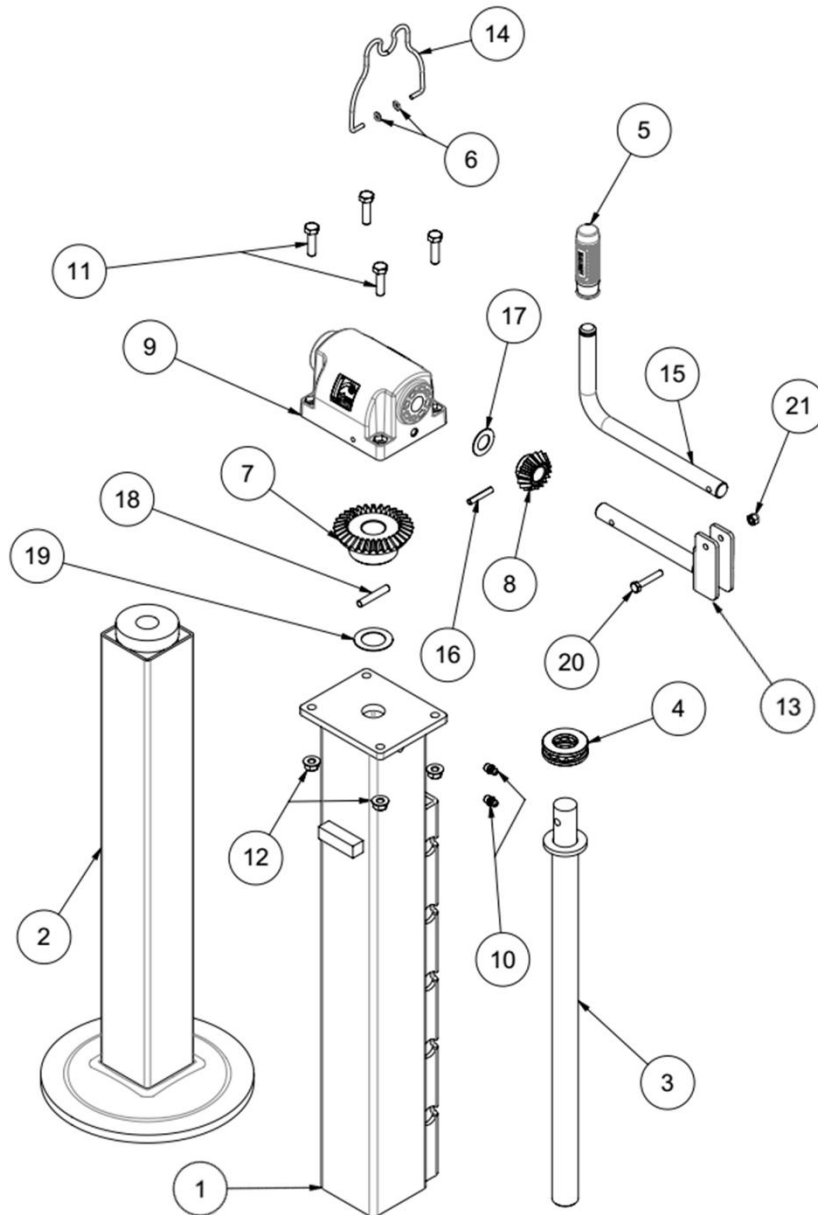
8.1	TRANSFERS AND LABELS.....	19
8.2	RIMA JACK.....	20
8.3	AXLE HUB – ADR.....	21
8.4	STANDARD DUTY TANDEM AXLE ASSEMBLY - GT6, GT8, GT10, GT14	23
8.5	HEAVY DUTY TANDEM AXLE ASSEMBLY - GT17, GT20.....	25
8.6	HYDRAULIC RAM MULTISTAGE – GT6, GT8, GT10	26
8.7	HYDRAULIC RAM MULTISTAGE – GT14, GT17, GT20	27
8.8	QUICK HITCH STAND - GT6, GT8, GT10.....	28
8.9	QUICK HITCH STAND – GT14, GT17, GT20.....	29
8.10	TAILGATE.....	30
8.11	SIDES, STANCHIONS, HEADBOARD – GT6, GT8, GT10	31
8.12	SIDES, STANCHIONS, HEADBOARD – GT14, GT17, GT20	32
8.13	TAILGATE RELEASE PULLEY	33
8.14	HYDRAULIC TAILGATE RELEASE.....	33
8.15	HYDRAULIC HOSE ASSEMBLY	34

8.1 Transfers and Labels

Item	Giltrap Part #	Description	Quantity
2	995-3025	Decal 'G'	1
3	995-1225	Label 'Do Not Reach Under'	1
4	995-1228	Label 'Ensure Jack Is In'	1
5	995-1820	Adhesive plate with serial number	1

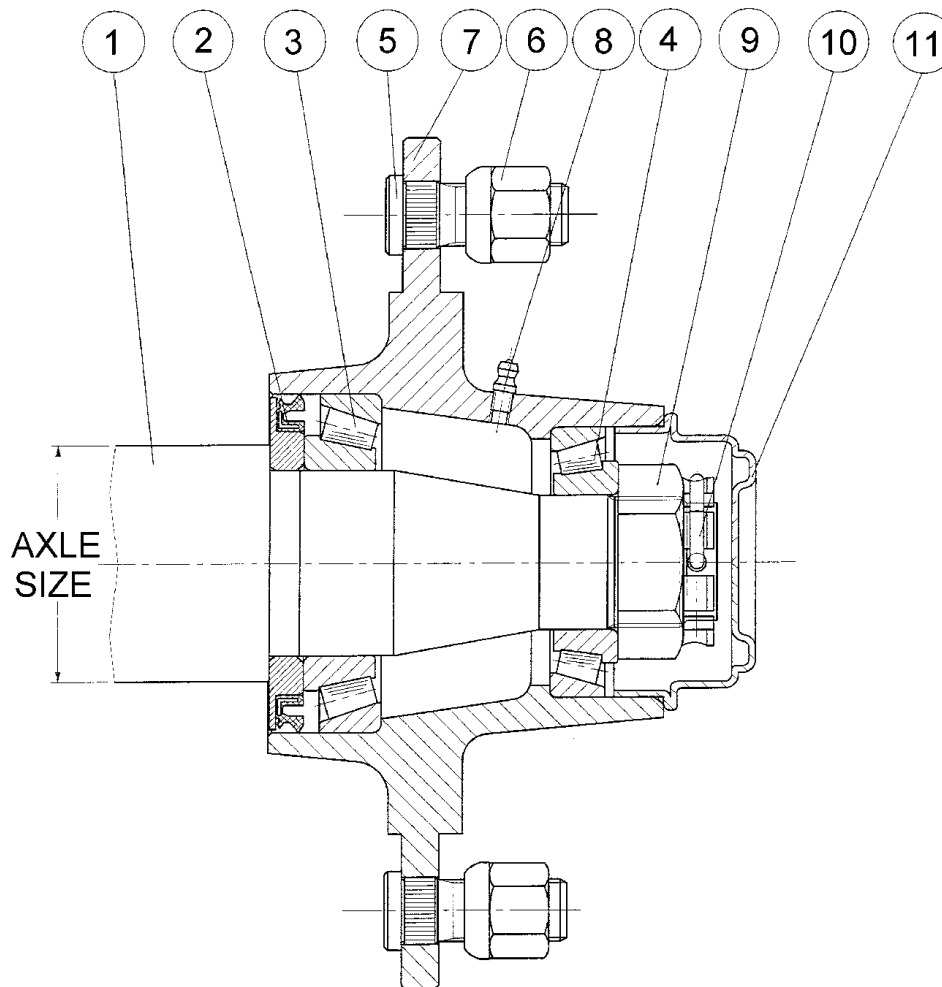
8.2 Rima Jack

RIMA Parking Jack



21	90064755	1
20	90076770	1
19	90068800	1
18	90070956	1
17	90068720	1
16	90071940	1
15	900411324	1
14	900416341	1
13	979303981	1
12	90064766	4
11	90079350	4
10	90039930	2
9	90049035	1
8	90033262	1
7	90033253	1
6	90069014	2
5	90041090	1
4	90034200	1
3	90057712	1
2	940655403	1
1	940275933	1
Item:	Code:	Q.ty:

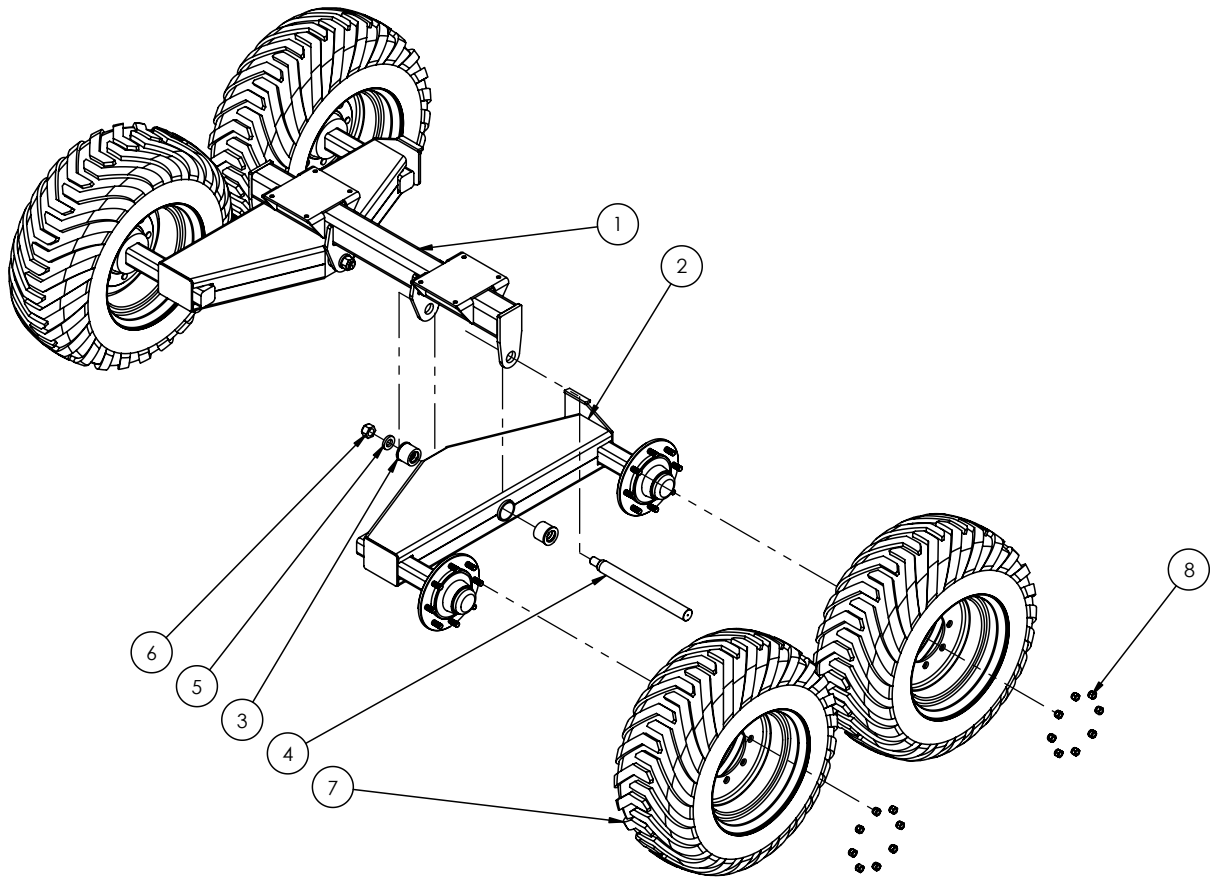
8.3 Axle Hub – ADR



Item	Giltrap Part #	Description	Quantity			
			60mm	70mm	80mm	90mm
1	HUB2000KG	Complete Stub Axle, ADR 6 stud 60sq	1			
1	HUB3000KG	Complete Stub Axle, ADR 6 stud 70sq		1		
1	HUB4250KG	Complete Stub Axle, ADR 8 stud 80sq			1	
1	HUB5000KG	Complete Stub Axle, ADR 8 stud 90sq				1
2	110-0193	Seal 57x100x10 O/A (80x100x8 nom.)	1			
2	110-0194	Seal 67x120x12 O/A (100x120x10 nom.)		1		
2	110-0195	Seal 78x130x10 O/A (108x130x8 nom.)			1	
2	110-0196	Seal 82x140x10 O/A (119x140x8 nom.)				1
3	BRG30211J2	Taper Roller Bearing, 30211 J2	1			
3	BRG30213J2	Taper Roller Bearing, 30213 J2		1		

Item	Giltrap Part #	Description	Quantity			
			60mm	70mm	80mm	90mm
3	BRG32215J2	Taper Roller Bearing, 32215 J2			1	
3	BRG32216J2	Taper Roller Bearing, 32216 J2				1
4	BRG30208J2	Taper Roller Bearing, 30208 J2	1			
4	BRG32210J2	Taper Roller Bearing, 32210 J2		1		
4	BRG32212J2	Taper Roller Bearing, 32212 J2			1	
4	BRG32113J2	Taper Roller Bearing, 32213 J2				1
5	110-0945	Wheel Stud, M18x50	6	6	8	
5	110-0950	Wheel Stud, M20x60x1.5				8
6	110-0917	Wheel Nut, M18	6	6	8	
6	110-0919	Wheel Nut, M20x1.5				8
7	-	Hub Only, ADR 2350 kg 6 stud	1			
7	-	Hub Only, ADR 3400 kg 6 stud		1		
7	-	Hub Only, ADR 4250 kg 8 stud			1	
7	-	Hub Only, ADR 5000 kg 8 stud				1
8	GRN8-45	Grease Nipple, M8x1.0 45 deg	1	1	1	1
9	110-1047	Slotted Nut, M39x1.5	1			
9	110-1047	Slotted Nut, M39x1.5		1		
9	110-1060	Slotted Washer Nut, M48x1.5			1	
9	110-1060	Slotted Washer Nut, M48x1.5				1
10	-	Retaining Clip (or Split Pin SP5x70)	1			
10	-	Retaining Clip (or Split Pin SP5x70)		1		
10	-	Retaining Clip (or Split Pin SP5x80)			1	
10	-	Retaining Clip (or Split Pin SP5x90)				1
11	110-0799	Grease Cap ADR Pressed Steel - 80mm	1			
11	110-0881	Grease Cap ADR Pressed Steel - 90mm		1		
11	110-0883	Grease Cap ADR Pressed Steel - 110mm			1	
11	110-0884	Grease Cap ADR Pressed Steel - 120mm				1

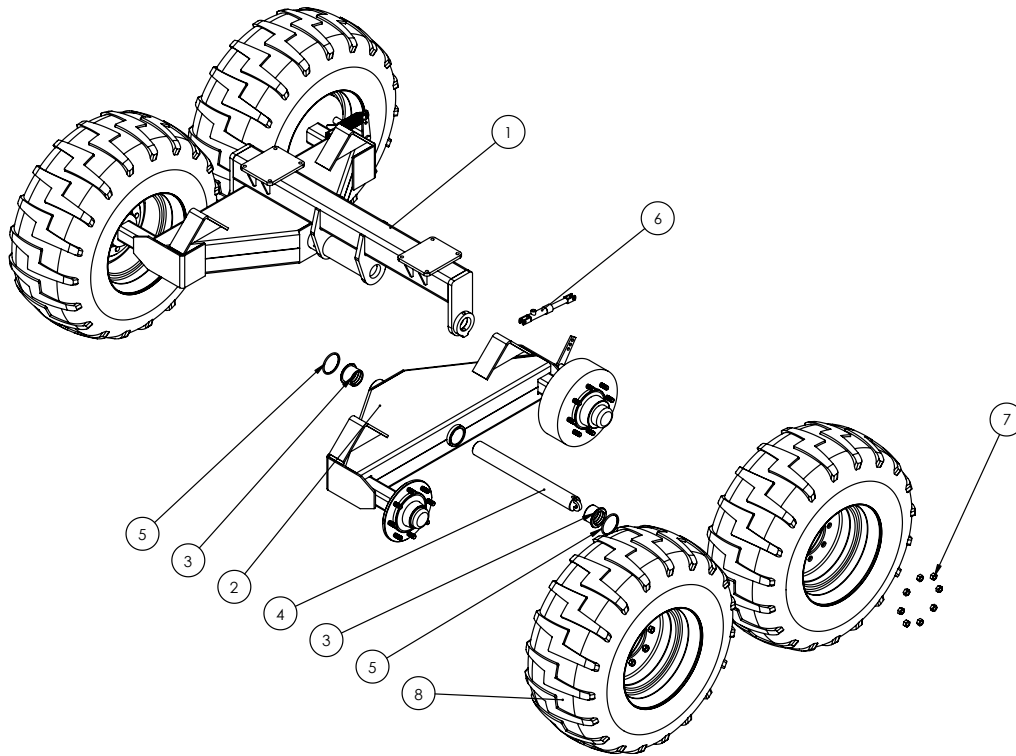
8.4 Standard Duty Tandem Axle Assembly - GT6, GT8, GT10, GT14



Item	Giltrap Part #	Description	Quantity Used			
			GT6	GT8	GT10	GT14
1	15092	GT6 Cross Beam	1	-	-	-
1	15089	GT8 Cross Beam	-	1	-	-
1	15066	GT10 Cross Beam, GT8 w/ 400.55-22.5 tyres	-	1	1	-
1	15144	Cross beam GT10 w/ 500.45- 22.5 tyres	-	-	1	-
1	15220	GT14 Cross Beam	-	-	-	1
2	50087	GT6 Walking Beam	2	-	-	-
2	14215	GT8 Standard Walking Beam	-	2	-	-
2	15067	GT10 Standard Walking Beam, GT8 w/ 400.55-22.5 tyres	-	2	2	-

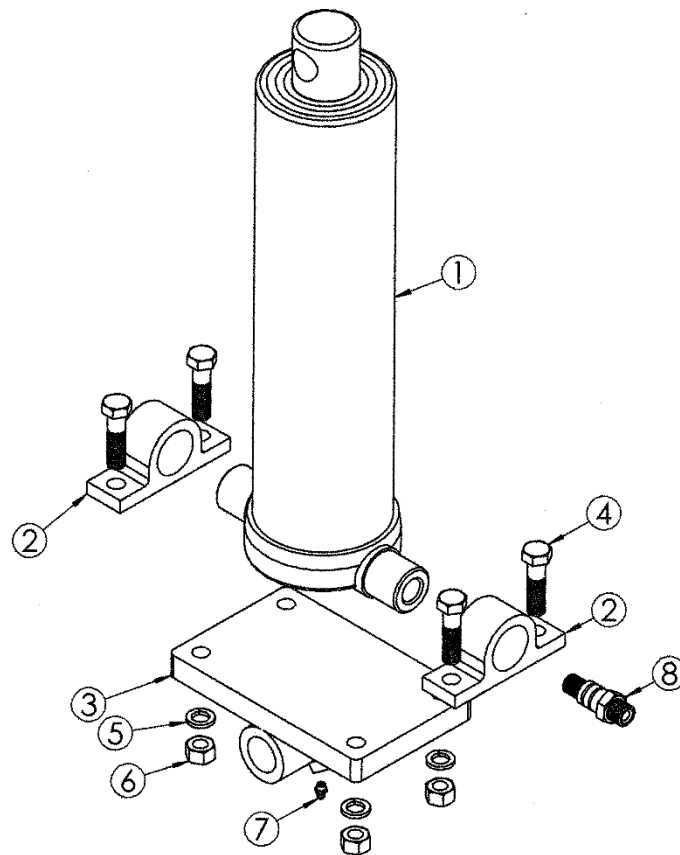
Item	Giltrap Part #	Description	Quantity Used			
			GT6	GT8	GT10	GT14
2	50851	GT10 Walking beam w/ 500.45-22.5 tyres	-	-	2	-
2	15221	GT14 Standard Walking Beam	-	-	-	2
2	15224	GT14 Walking Beam w/ 500.60-22.5 tyres	-	-	-	2
3	C28176	Axle Bush	4	4	4	4
4	BESAP	Axle Shaft	2	-	-	-
4	BEAPHD	Axle Shaft	-	2	2	2
5	50045	Axle Pivot Washer	-	2	2	2
6	Nyloc Nut 1.25 UNF	Nyloc Nut 1.25 UNF	2	2	2	2
7	WHLA11.5/80-12	Wheel Assy 11.5/80 X 15.3 - 6 Stud. GT6 Standard wheels.	4	-	-	-
7	WHLA400X15.5- 146T	Wheel Assy 400/60 X 15.5 - 6 Stud. GT8 Standard wheels.	-	4	-	-
7	WHLA400/55- 22.5	Wheel Assy 400/55 X 22.5 - 8 Stud. GT10 Standard wheels. GT8 large wheels.	-	4	4	-
7	WHLA500/45- 22.5	Wheel Assy 500/45 X 22.5, 8 Stud, GT14 Standard, GT10 large wheels	-	-	4	4
7	WHLA500/60- 22.5	Wheel Assy 500/60 X 22.5, 8 Stud, GT14 large wheels	-	-	-	4
8		Wheel nut	24 or 32 as req'd	24 or 32 as req'd	32	32

8.5 Heavy Duty Tandem Axle Assembly - GT17, GT20



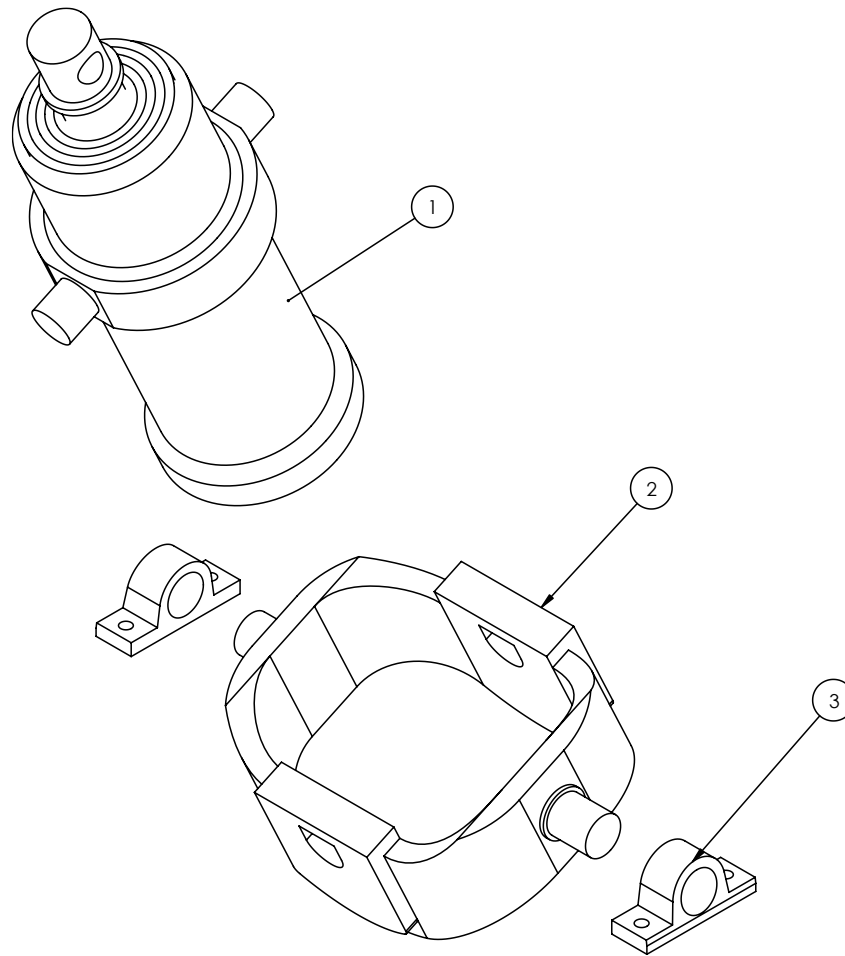
Item	Giltrap Part #	Description	Quantity Used	
			GT17	GT20
1	10828	GT17 Width Cross Beam Configuration	1	-
1	10828	GT20 Width Cross Beam Configuration	-	1
2	15522	Walking beam weldment, GT17	2	-
2	-	Walking beam weldment, GT20	-	2
3	C28176-3	Pivot bush	4	4
4	50390	HD Axle Shaft	2	2
5	OR105	O Ring 105mm ID x 7mm	4	4
6	RAMADR030/025	Ram Brake Cylinder D030/025 c/w Spring	As required	As required
7		Wheel Nut	As required	As required
8	WHLA500/60-22.5	Wheel Assy 500/60 X 22.5, 8 Stud. GT17 Standard	4	-
8	WHLA560/60-22.5	Wheel Assy 560/60 X 22.5. GT20 Standard.	-	4

8.6 Hydraulic Ram Multistage – GT6, GT8, GT10



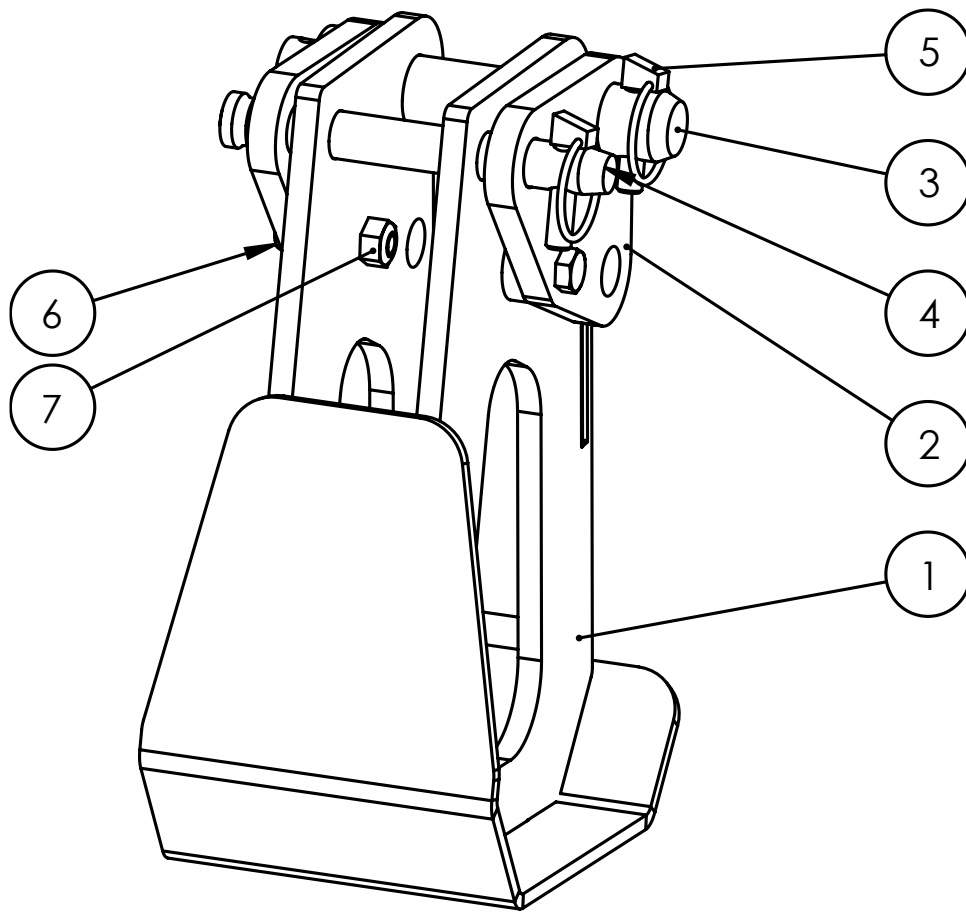
Item	Giltrap Part #	Description	Quantity Used		
			GT6	GT8	GT10
1	RAMTT150.41.80	4 Stage Ram	1	-	-
1	RAMTT170.41.80	4 Stage Ram	-	1	-
1	RAMTT215.51.90	5 Stage Ram	-	-	1
2	RAMTT.45FOOTMOU	Bolt-On Foot Mount	-	-	2
3	900-0485	Swivel Mount Base	-	-	1
4	B16X60	Bolt, M16x60	4	4	4
5	WASG16	Washer, Spring M16	4	4	4
6	N16	Nut, M16	4	4	4
7	GRN8-ST	Grease Nipple, M8x1.0 Straight	1	1	1
8	RAMTT-INLET	Threaded Inlet Fitting	1	1	1
-	SLK8T	Seal Kit, 4 Stage Ram	1	1	
-	SLK12T	Seal Kit, 5 Stage Ram	-	-	1

8.7 Hydraulic Ram Multistage – GT14, GT17, GT20



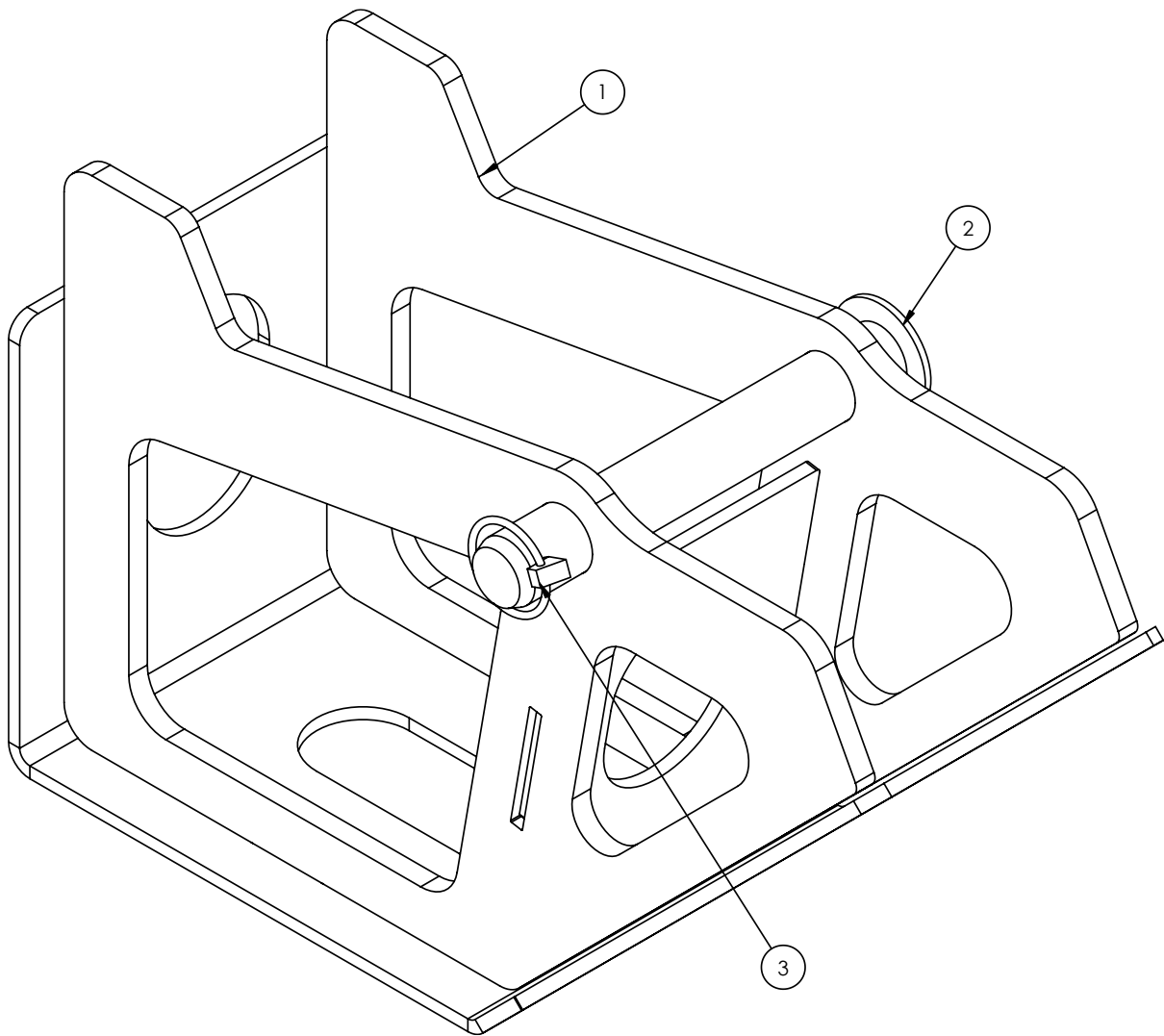
Item	Giltrap Part #	Description	Quantity Used		
			GT14	GT17	GT20
1	RAMTT4051	GT14 Ram	1	-	-
1	11898	GT17 Ram	-	1	-
2	RAMTTCULLA5	Culla 5 Cradle Mount	1	-	-
2	RAMTTCULLA6	Culla 6 Cradle Mount	-	1	-
3	RAMTTD50FTMT	Foot Mount	2	2	-

8.8 Quick Hitch Stand - GT6, GT8, GT10



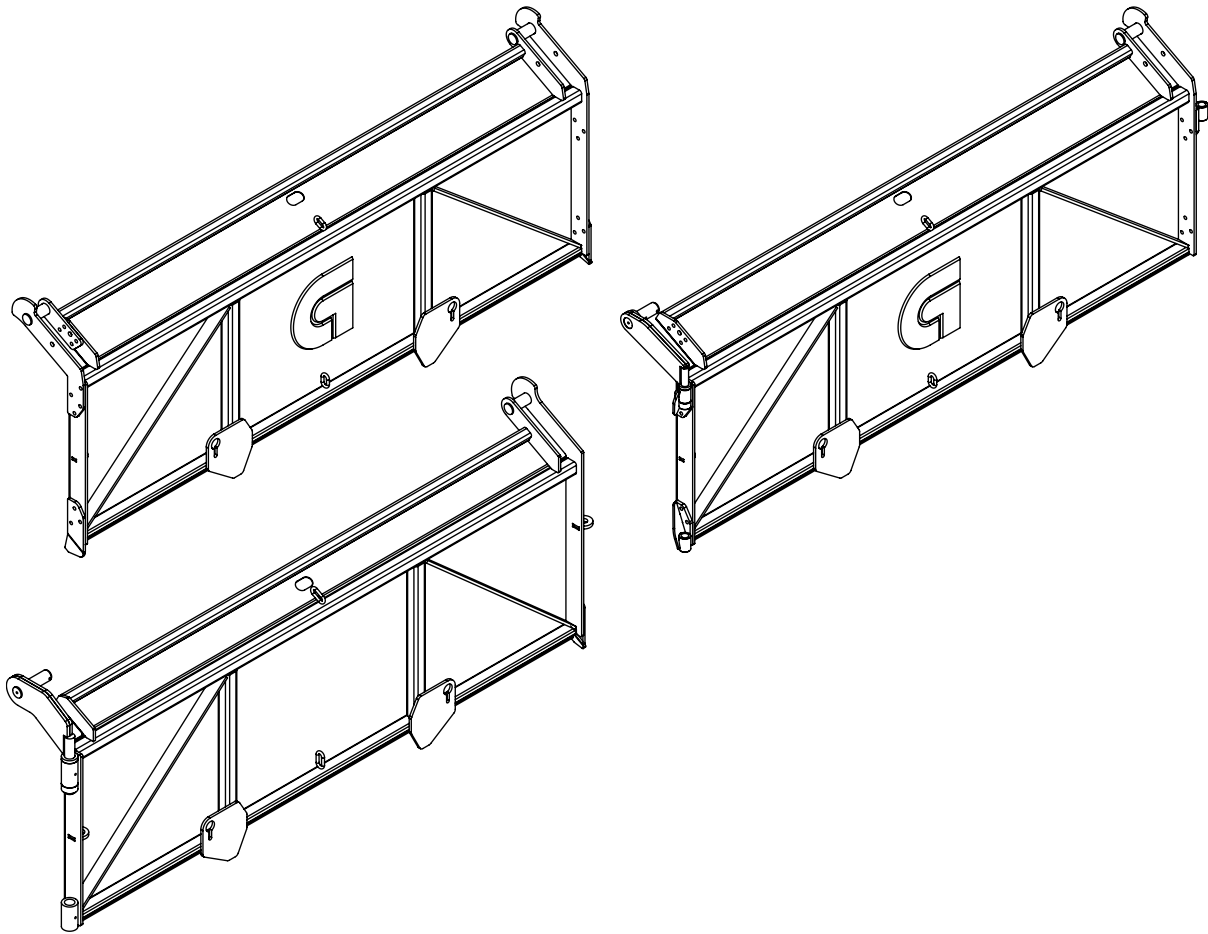
Item	Giltrap Part #	Description	Quantity Used
1	14004	Quick Hitch Foot	1
2	14004-4	Multi Spacer	2
3	GBB2662	Pivot Pin, QH Foot - 5-12T Tip	1
4	S.77	Top Link Pin 19x127mm Cat.1	1
5	FP10.013	Lynch Pin 11mm Round Ring	2
6	B10X50	Bolt, M10X40	2
7	NN10	Nut, Nyloc M10	2

8.9 Quick Hitch Stand – GT14, GT17, GT20



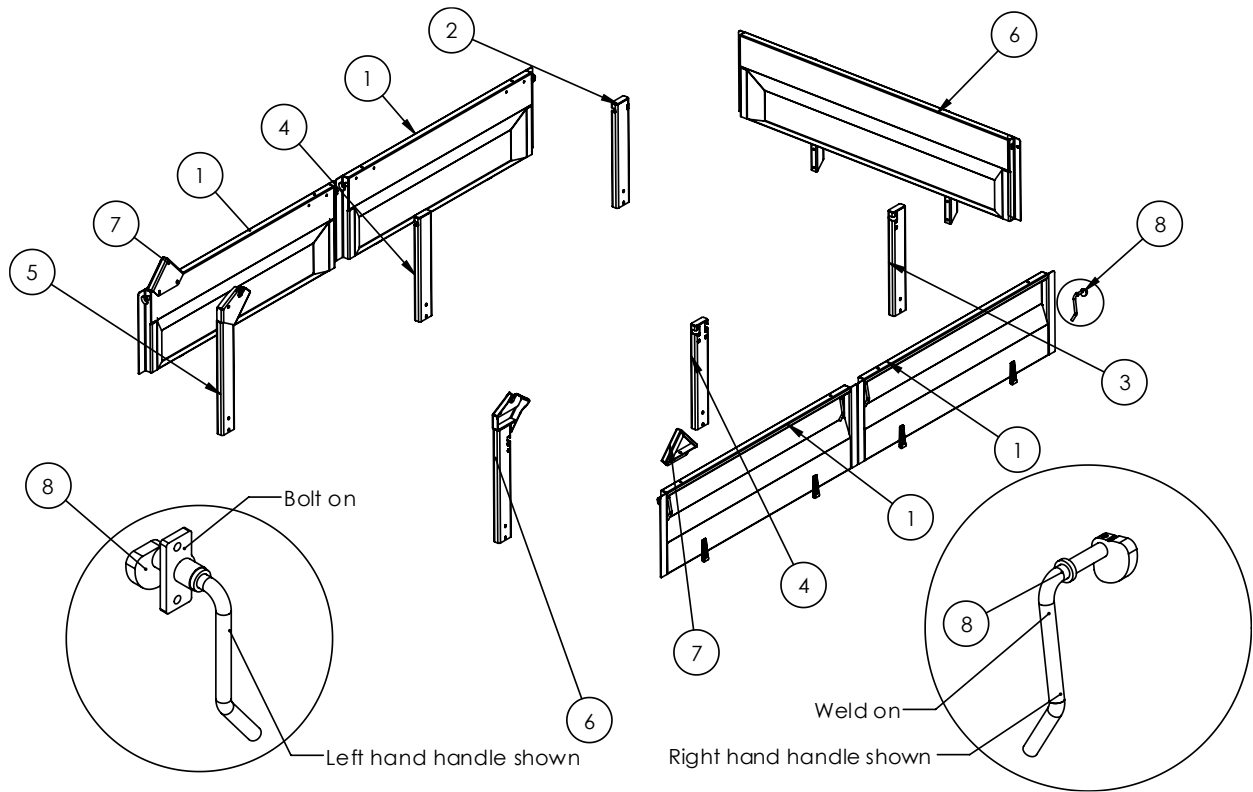
Item	Giltrap Part #	Description	Quantity Used
1	14987	Quick hitch foot	1
2	14879	Quick hitch foot pin	1
3	FP10.006	Lynch pin	1

8.10 Tailgate



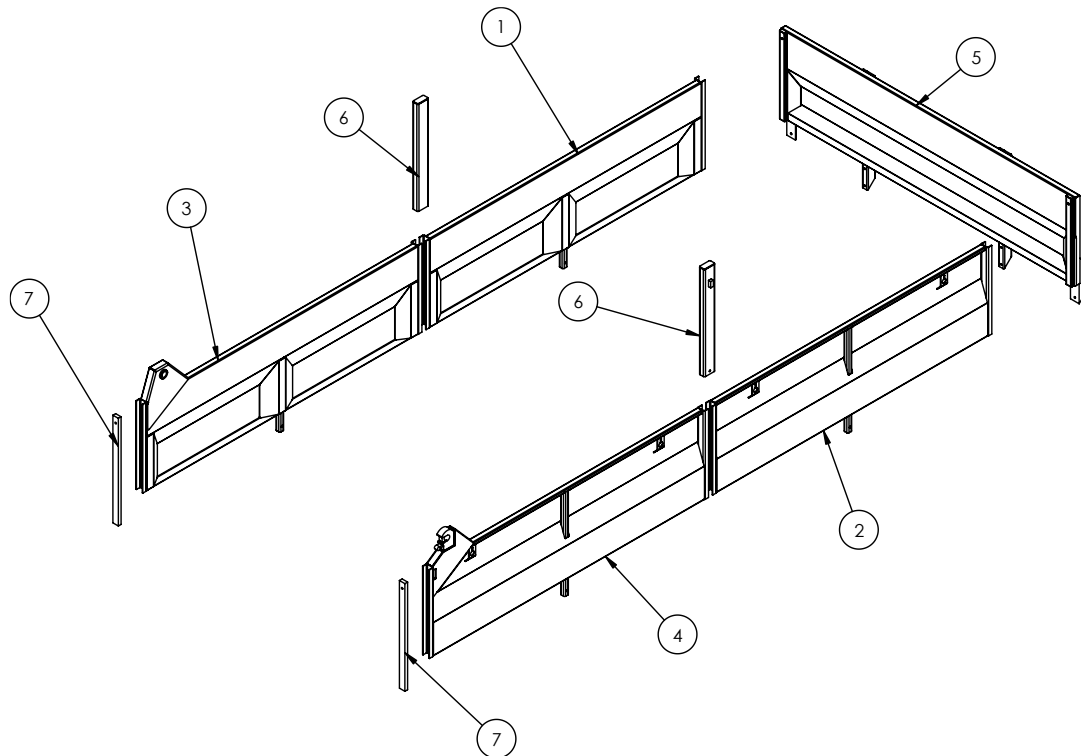
Item	Giltrap Part #	Description
1	15107	GT6 2.4m Standard Tailgate
1	15108	GT6 2.4m Side Swing Tailgate
1	15080	GT8 GT10 Standard Tailgate
1	15082	GT8 GT10 Side Swing Tailgate
1	15229	GT14 Tailgate
1	15264	GT17 Tailgate
1	-	GT20 Tailgate

8.11 Sides, Stanchions, Headboard – GT6, GT8, GT10



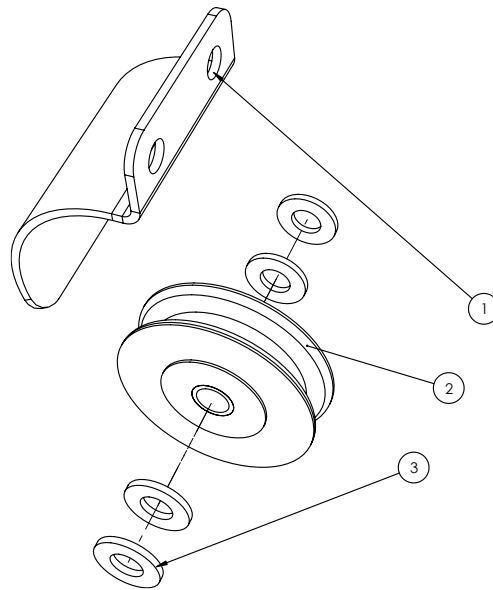
Item	Giltrap Part #	Description	Quantity Used		
			GT6	GT8	GT10
1	14416	GT6 Trailer Side – Weld on Handle	2	-	-
1	15843	GT6 Trailer Side – Bolt on Handle	2		
1	14274	GT8 Trailer Side – Weld on Handle	-	4	-
1	15842	GT8 Trailer Side – Bolt on Handle	-	4	-
1	14958	GT10 Trailer Side – Weld on Handle	-	-	4
1	15827	GT10 Trailer Side – Bolt on Handle	-	-	4
2	14786	Front Left Stanchion GT6	1	-	-
2	14729	Front Left Stanchion GT8 GT10	-	1	1
3	14787	Front Right Stanchion GT6	1	-	-
3	14731	Front Right Stanchion GT8 GT10	-	1	1
4	14722	Centre Stanchion GT8 GT10	-	2	2
5,6	14475	Standard Rear Stanchion (Specify left or right) GT6	2	-	-
5,6	14730	Standard Rear Stanchion (Specify left or right) GT8 GT10	-	2	2
5	14422	Side Swing Rear Left Stanchion GT6	1	-	-
5	14728	Side Swing Rear Left Stanchion GT8 GT10	-	1	1
6	14423	Side Swing Rear Right Stanchion GT6	1	-	-
6	14280	Side Swing Rear Right Stanchion GT8 GT10	-	1	1
7	14284	Side Panel Rear Deflector	2	2	2
8	15840	Handle assembly. Specify if it is a left-hand handle or a right-hand handle. Weld on handles require side replacement.	4	8	8

8.12 Sides, Stanchions, Headboard – GT14, GT17, GT20



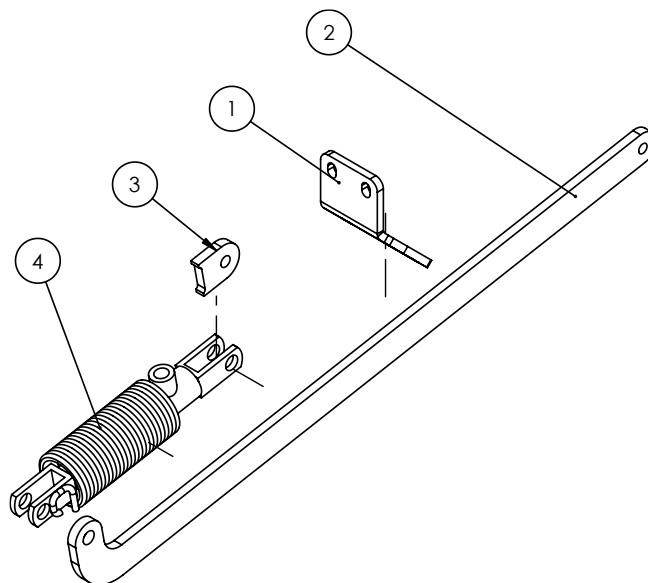
Item	Giltrap Part #	Description	Quantity Used		
			GT14	GT17	GT20
1	15225	Side, GT14, WLD	1	-	-
1	15220	Left Front Side, GT17, WLD	-	1	-
1			-	-	
2	15225	Side, GT14, WLD	1	-	-
2	15512	Side, GT17, WLD	-	1	-
2			-	-	
3	15227	Left Rear Side, GT14, WLD	1	-	-
3	15514	Left Rear Side, GT17, WLD	-	1	-
3					
4	15226	Right Rear Side, GT14, WLD	1	-	-
4	15513	Right Rear Side, GT17, WLD	-	1	-
4					
5	15228	Headboard, GT14, WLD	1	-	-
5	15516	Headboard, GT17, WLD	-	1	-
5					
6	15231	Stanchion, GT14, GT17, WLD	2	2	-
6					
7	15232	Rear Upright Bar, GT14	2	-	-
7	15519	Rear Upright Bar, GT17	-	2	-
7					

8.13 Tailgate Release Pulley



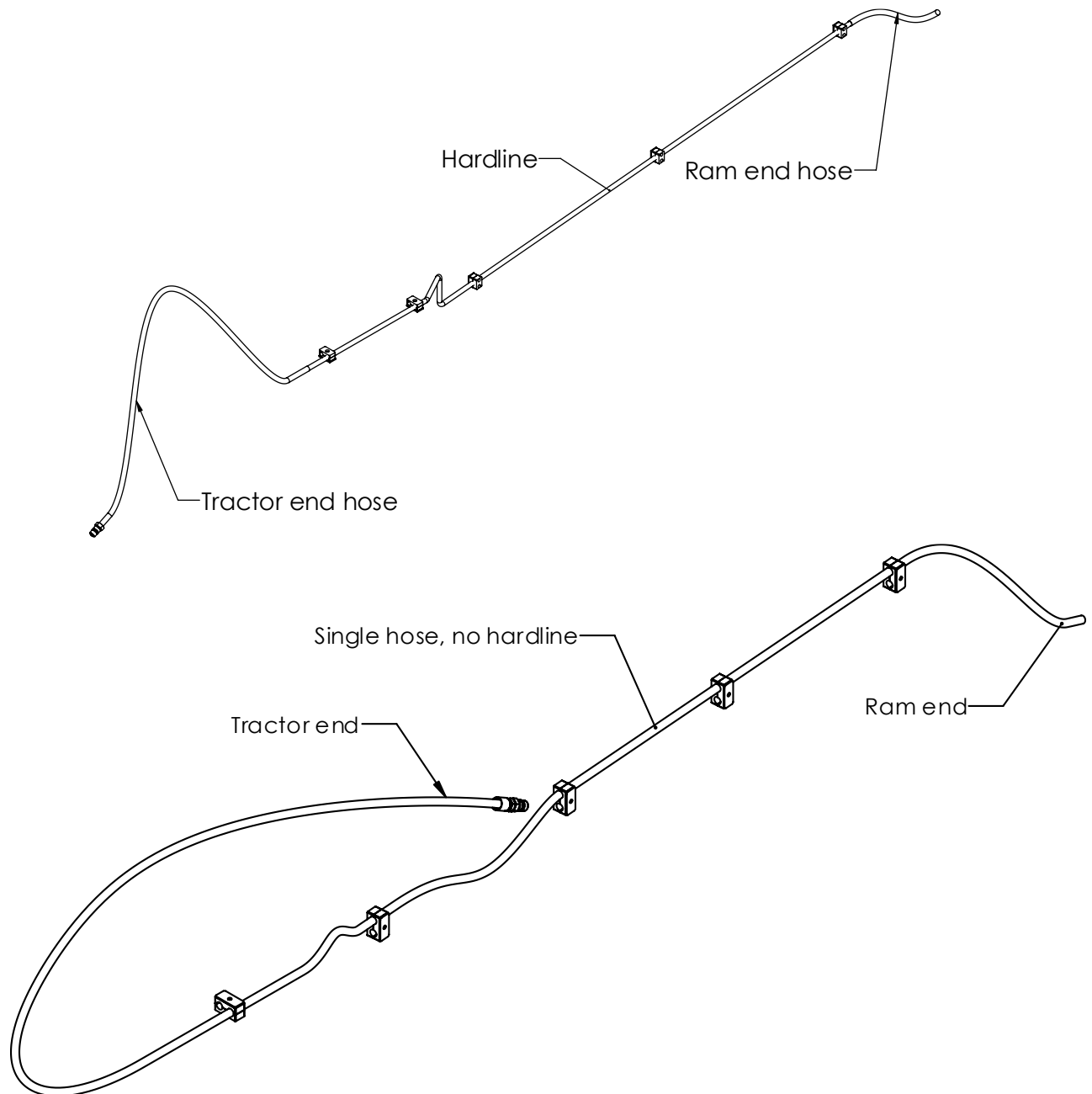
Item	Giltrap Part #	Description	Quantity Used
1	14293	AGC wire cover	1
2	AGCW	AGC Pulley	1
3	Washer	M12 Washer	As req'd

8.14 Hydraulic Tailgate Release



Item	Giltrap Part #	Description	Quantity Used
1	14289-1	Release bracket	1
2	14289-2	Tailgate trip arm	1
3	15077	Flat Bushing	1
4	RAMADDRD030-025	Brake ram	1

8.15 Hydraulic Hose Assembly



There are two types of hose assemblies used on GT trailers:

- 1) On some GT6, GT8 and GT10 trailers, hydraulic hardline pipe is used. This means that you will need to specify both which model trailer you have, along with whether you need the tractor end or ram end of the hose.
- 2) On all other GT trailers, you will only need to specify which model trailer you have.

If you have a custom designed trailer, please inform us of this.

24/7

We've assembled a comprehensive dealer network that knows what it takes to keep your Giltrap machinery in peak condition. With a blend of local knowledge and engineering expertise our team is here 24/7, so your business doesn't have to stop.

To find out more about our local dealer network or to discuss your specific needs, contact a member of our team.

NEW ZEALAND (HEAD OFFICE)

TEL +64 7 873 4199

EMAIL info@giltrapag.co.nz

giltrapag.co.nz

AUSTRALIA

TEL +61 3 9369 6548

EMAIL sales@giltrapag.com.au

giltrapag.com.au

To find your local Giltrap and Duncan dealer visit

giltrapag.co.nz/our-dealers