



Hydraulic Wood Splitter

Parts Manual



Part Number: 595-0016

Giltrap Engineering Ltd
P.O. Box 83
7 Main North Rd
Otorohanga, New Zealand
Phone: +64 7 873 7199
Fax: +64 7 873 8131
Email: info@giltrapeng.co.nz
Website: www.giltrapag.co.nz



Disclaimer

Although every endeavour has been made to compile as near to complete records as possible for the machine described, it is possible some information is incomplete or missing.

Giltrap Engineering request that you treat this book as a guide only, and offer any assistance necessary to procure the information or part you may require.

For parts or service enquires, please contact the applicable numbers on the previous page.

First Edition printed September 2002
Second Edition amended and reprinted November 2006

Copyright © 2006 by Giltrap Engineering Ltd.
Printed in New Zealand

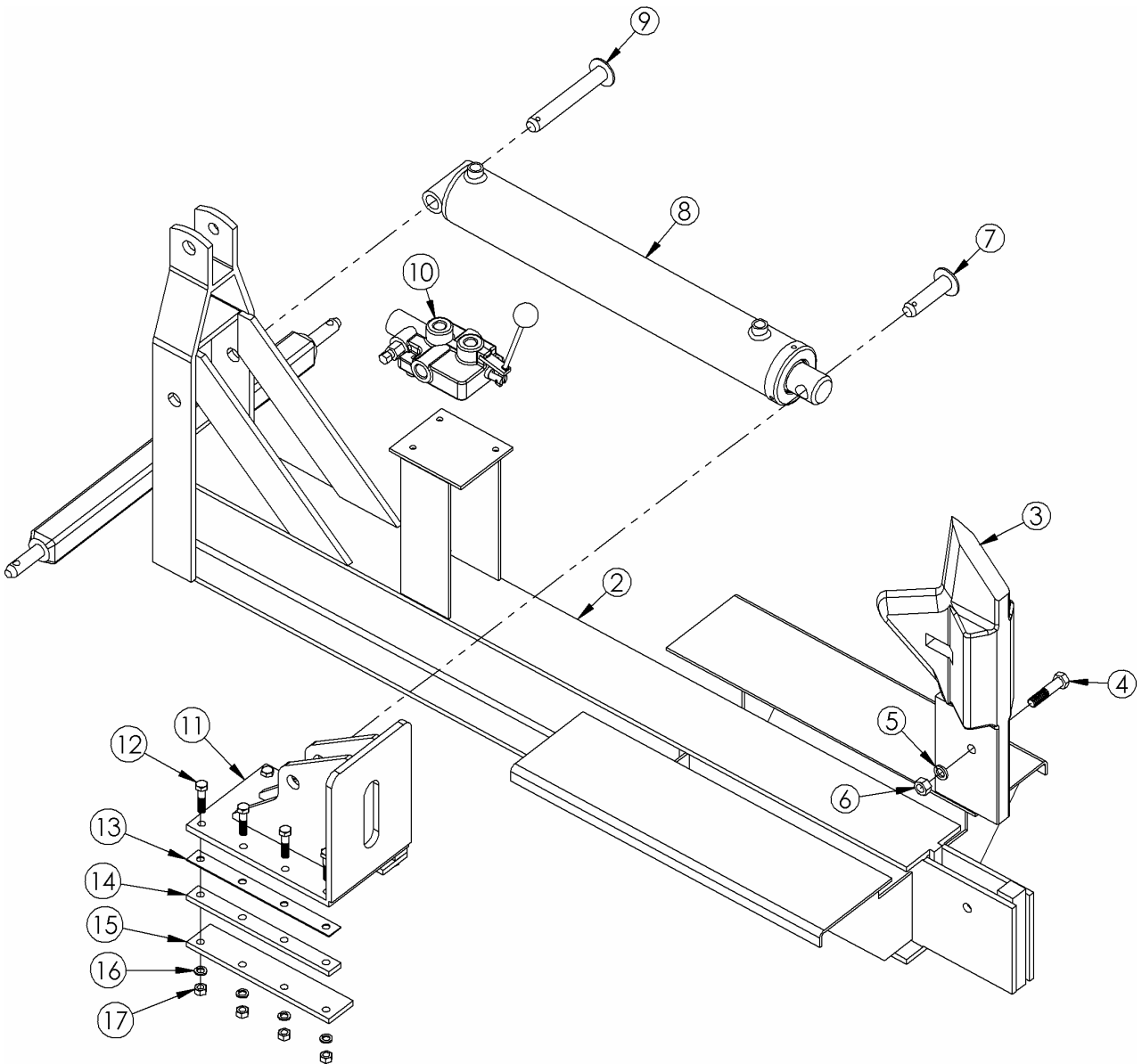
All rights reserved. Reproduction or use, without express permission, of editorial or pictorial content, in any manner, is prohibited.



Table of Contents

WOOD SPLITTER ASSEMBLY	4
HYDRAULIC PLUMBING	6
HYDRAULIC CONTROL VALVE	7
HYDRAULIC RAM – V1	8
HYDRAULIC RAM – V2	9
HYDRAULIC RAM – V3	10
HYDRAULIC RAM – V4	11
HYDRAULIC RAM – V5 (HUSTLER)	12

Wood Splitter Assembly





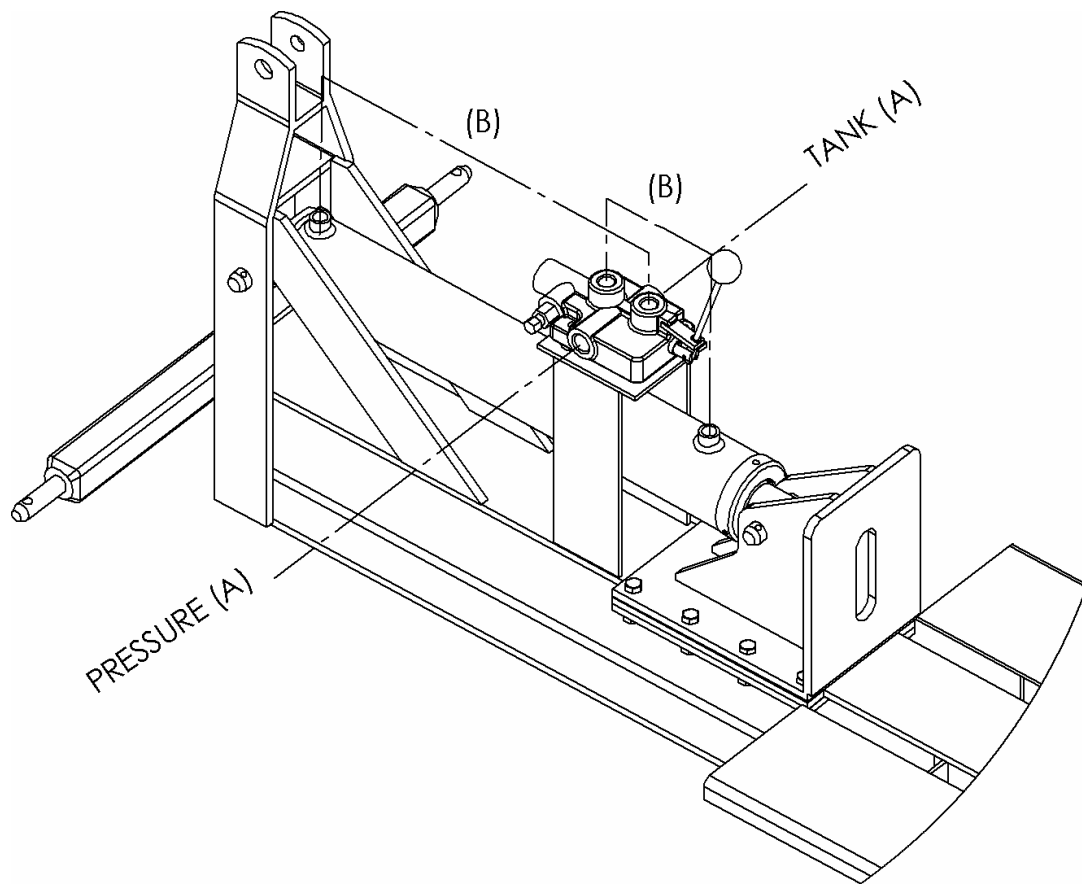
Wood Splitter Assembly

Item	Giltrap Part #	Description	Quantity Used
1	WSHY	Complete Assembly	1
2	WSHYB	Chassis	1
3	WSK	Splitting Knife (not available separately)	1
4	B16x70	Bolt, M16x70	1
5	WASG16	Washer, Spring M16	1
6	N16	Nut, M16	1
7	900-0116	Pin, Slide 25mm	1
8	RAMWS	Hydraulic Ram, Double Acting	1
9	900-0115	Pin, Ram Base Mount 25mm	1
10	WSVPT	Hydraulic Control Valve	1
11	WSHYS	Slide Plate	2
12	B12x50	Bolt, M12x50	8
13	WSSHIM	Slide Spacer Shim	2
14	WSSPACER	Slide Spacer	2
15	WSLSL	Slide Lower Slide Plate	2
16	WASG12	Washer, Spring M12	8
17	N12	Nut, M12	8

Control valve parts available separately

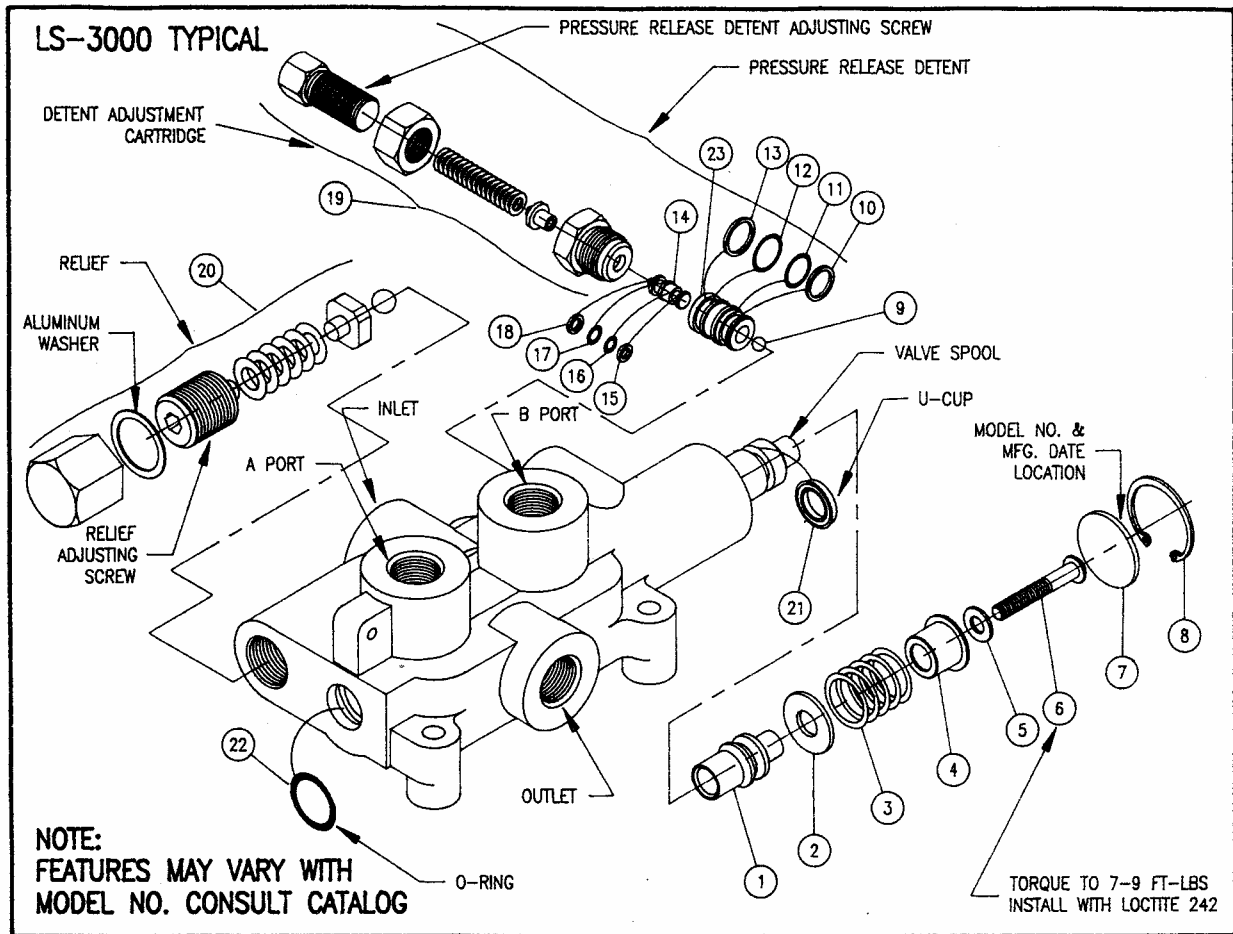
-	HYC1BDA-H	Handle	1
-	HYC1BDA-HK	Handle Kit	1

Hydraulic Plumbing



Hose #	Giltrap Part #	Description	Quantity
A	450-1794	Tractor to valve	2
B	450-1787	Valve to ram	2

Hydraulic Control Valve



NOTE:
FEATURES MAY VARY WITH
MODEL NO. CONSULT CATALOG

PLEASE NOTE:
BEFORE REMOVING VALVE SPOOL OR SPOOL SLEEVE REMOVE DETENT ADJUSTING CART., DETENT PISTON AND STEEL BALL. INSTALL SPOOL AND SPOOL SLEEVE BEFORE REINSTALLING STEEL BALL.

LS-3000 KITS AND CARTRIDGES

PRESSURE RELEASE DETENT
This feature provides a pressure release detent for the spool 'out' (handle in) position. When the spool is manually placed in the detent position oil is directed to the 'B' work port (the port away from the handle). When the pressure in the 'B' port reaches a preset level the detent will release and the spool will center. The factory setting is 1400 psi. The detent release pressure is adjustable by loosening the jam nut and turning the adjusting screw. Turning the adjusting screw clockwise will increase the detent release pressure and counterclockwise will decrease the detent release pressure. NOTE: if the detent release pressure is set too high the spool will not center, if the pressure is too low the detent will not hold. If cap screw item 6 becomes loose detent will not function properly.

RELIEF VALVE
An adjustable ball spring relief valve is standard on all LS-3000 valves. The standard factory setting is 2250 psi @ 3 gpm and 120°F. Other settings can be specified. The relief pressure is adjusted by removing acorn nut, and turning the adjusting screw. Turning the adjusting screw clockwise will increase the pressure and counterclockwise will decrease the pressure (a pressure gauge must be installed in the inlet line whenever the relief pressure is adjusted). Do not backout adjusting screw to the point it falls out.

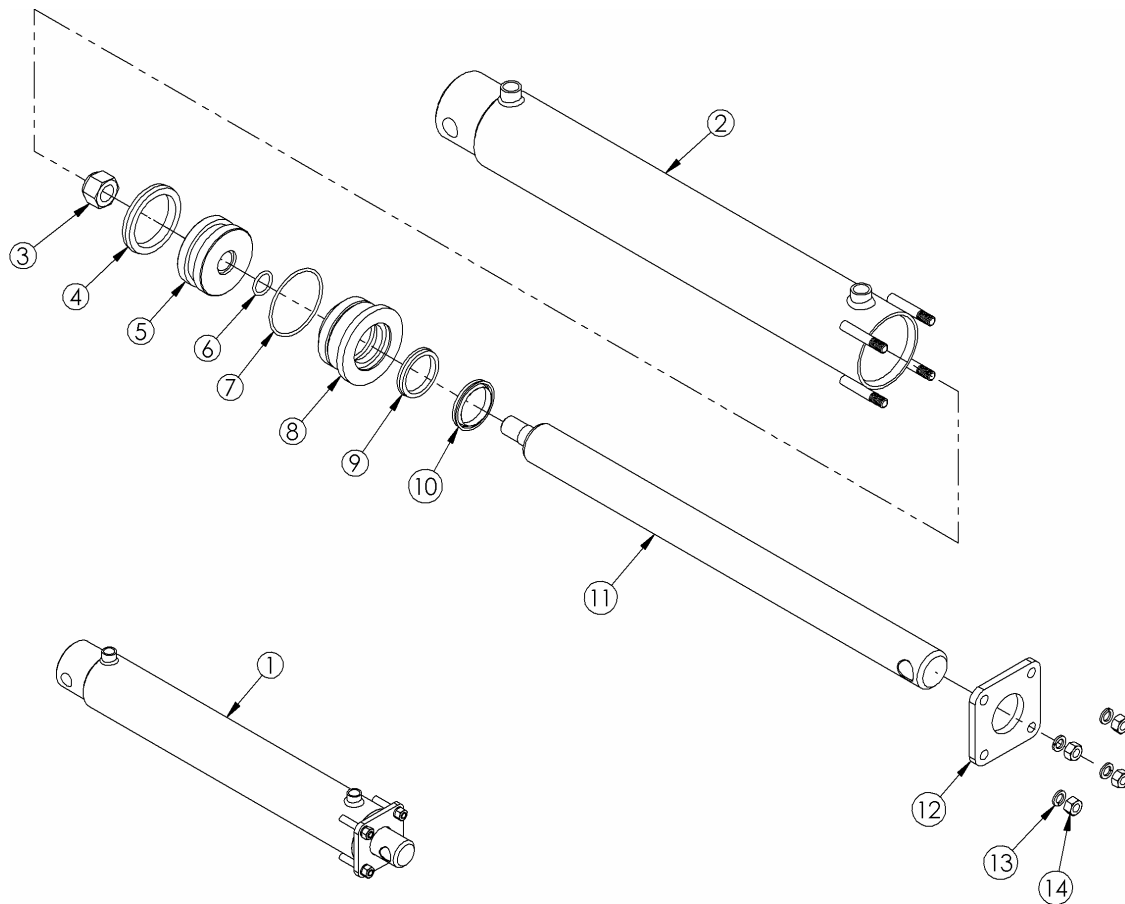
WARNING: OVERPRESSURE MAY CAUSE SUDDEN AND UNEXPECTED FAILURE OF A COMPONENT IN THE HYDRAULIC SYSTEM RESULTING IN SERIOUS PERSONAL INJURY. ALWAYS USE A GAUGE WHEN ADJUSTING A RELIEF VALVE.

ITEM	QTY	PART NO.	DESCRIPTION
1	1	670700019	DETENT SLEEVE
2	1	670500033	WASHER
3	1	670300020	SPRING
4	1	671400010	STOP CUP
5	1	670500026	WASHER
6	1	220000953	CAP SCREW
7	1	670500032	SPACER
8	1	230001125	SNAP RING
9	1	230009009	STEEL BALL
10	1	240019013	BACK-UP WASHER
11	1	240000013	O-RING
12	1	240000014	O-RING
13	1	240019014	BACK-UP WASHER
14	1	671100011	PISTON
15	1	240019007	BACK-UP WASHER
16	1	240016067	O-RING
17	1	240016068	O-RING
18	1	240019008	BACK-UP WASHER
19	1	660330002	DETENT ADJUSTING CART.
20	1	660125004	RELIEF KIT
21	1	240016086	U-CUP
22	1	2400000210	O-RING
23	1	671100012	PISTON SLEEVE
		660530001	LS-3000 SEAL KIT
		660125004	RELIEF KIT
		660330002	DETENT ADJUSTING CART.
		660130007	PRESSURE RELEASE DETENT KIT
		660130001	COMPLETE HANDLE KIT

11-22-95 REVISION 2

672100002

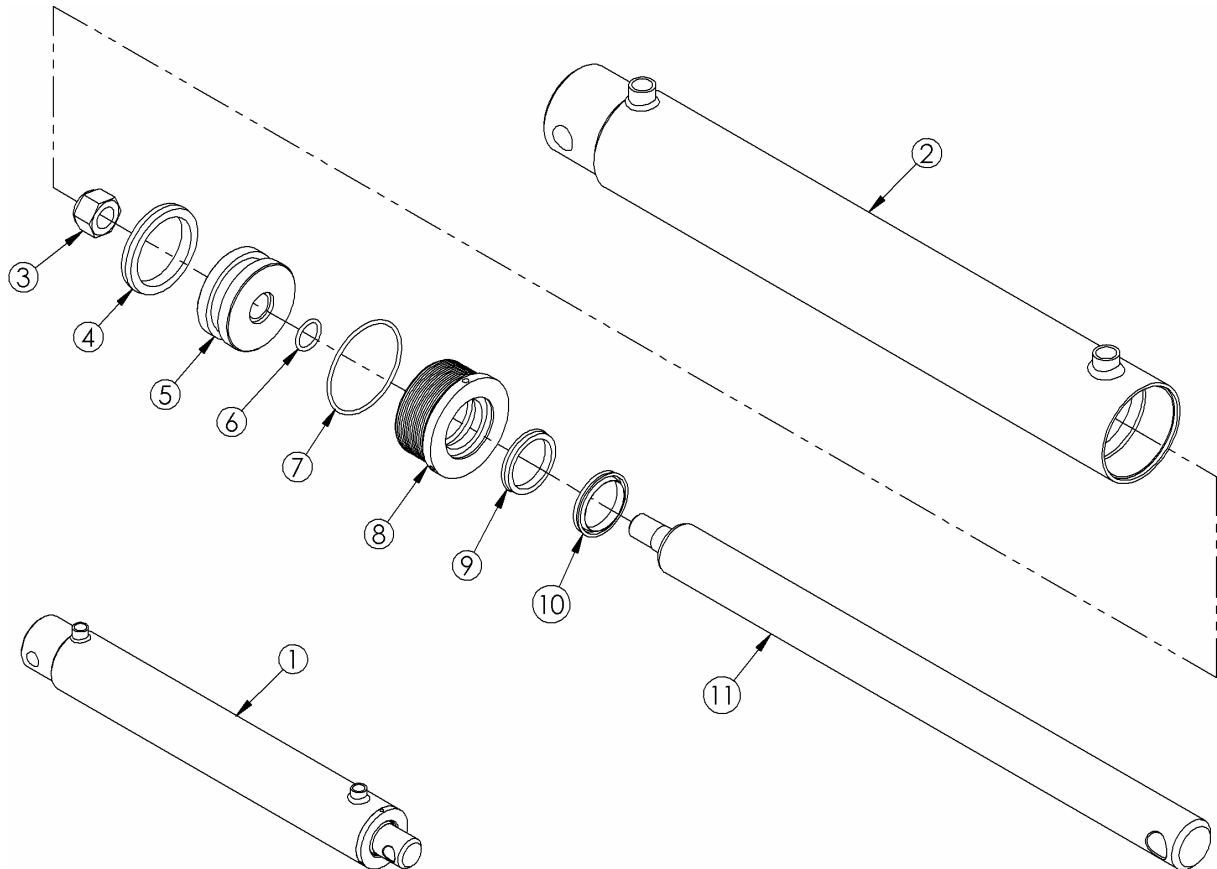
Hydraulic Ram – V1



Item	Giltrap Part #	Description	Quantity Used
1	RAMWS	Complete Ram Assembly	1
2	-	Ram Cylinder	1
3	-	Nut, Nyloc	1
4	SLLS350AWR	Seal, 3x3-1/2	1
5	-	Piston, 3-1/2"	1
6	OR214	O-Ring, 1x1/8	1
7	OR236	O-Ring, 3-1/4x1/8	1
8	-	Retaining Head	1
9	SLU2-1/2X2	Seal, Pressure 2x2-1/2x3/8 U Ring	1
10	SLW62-200	Seal, Wiper 2" Wyclip	1
11	-	Shaft	1
12	-	Head Retaining Plate	1
13	WASG12	Washer, Spring M12	4
14	N12	Nut, M12	4
-	SLKWS-1	Seal Kit (Contains #4, #6, #7, #9, #10)	1

Note: Check bore and shaft sizes before ordering parts. Use the above information as a guide only.

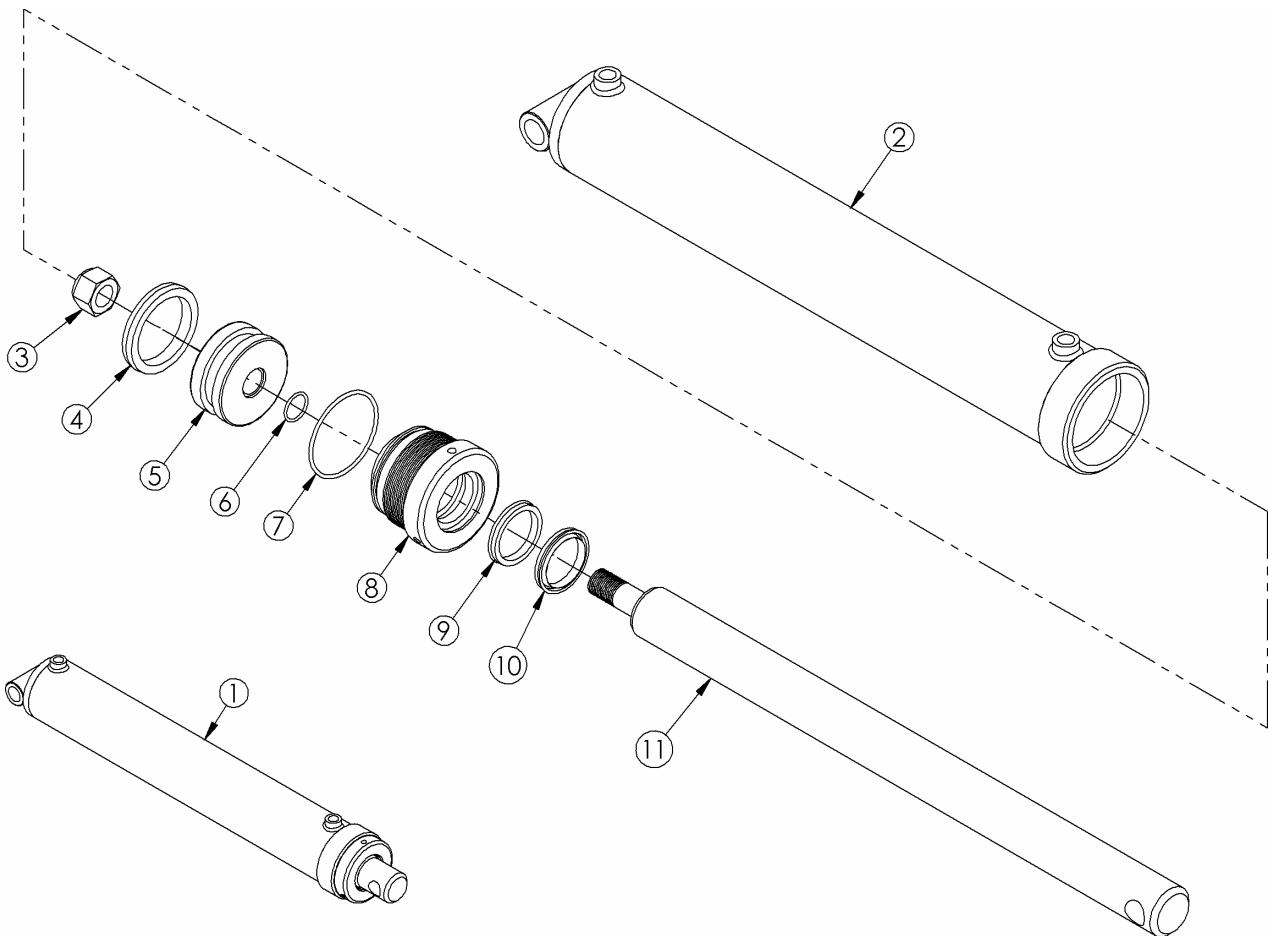
Hydraulic Ram – V2



Item	Giltrap Part #	Description	Quantity Used
1	RAMWS	Complete Ram Assembly	1
2	-	Ram Cylinder	1
3	NN24	Nut, Nyloc M24	1
4	SLLS350AWR	Seal, 3x3-1/2	1
5	-	Piston, 3-1/2"	1
6	OR214	O-Ring, 1x1/8	1
7	OR238	O-Ring, 3-1/2x1/8	1
8	-	Retaining Head, Threaded	1
9	SLU2-1/2X2	Seal, Pressure 2x2-1/2x3/8 U Ring	1
10	SLW62-200	Seal, Wiper 2" Wyclip	1
11	-	Shaft	1
-	SLKWS-2	Seal Kit (Contains #4, #6, #7, #9, #10)	1

Note: Check bore and shaft sizes before ordering parts.

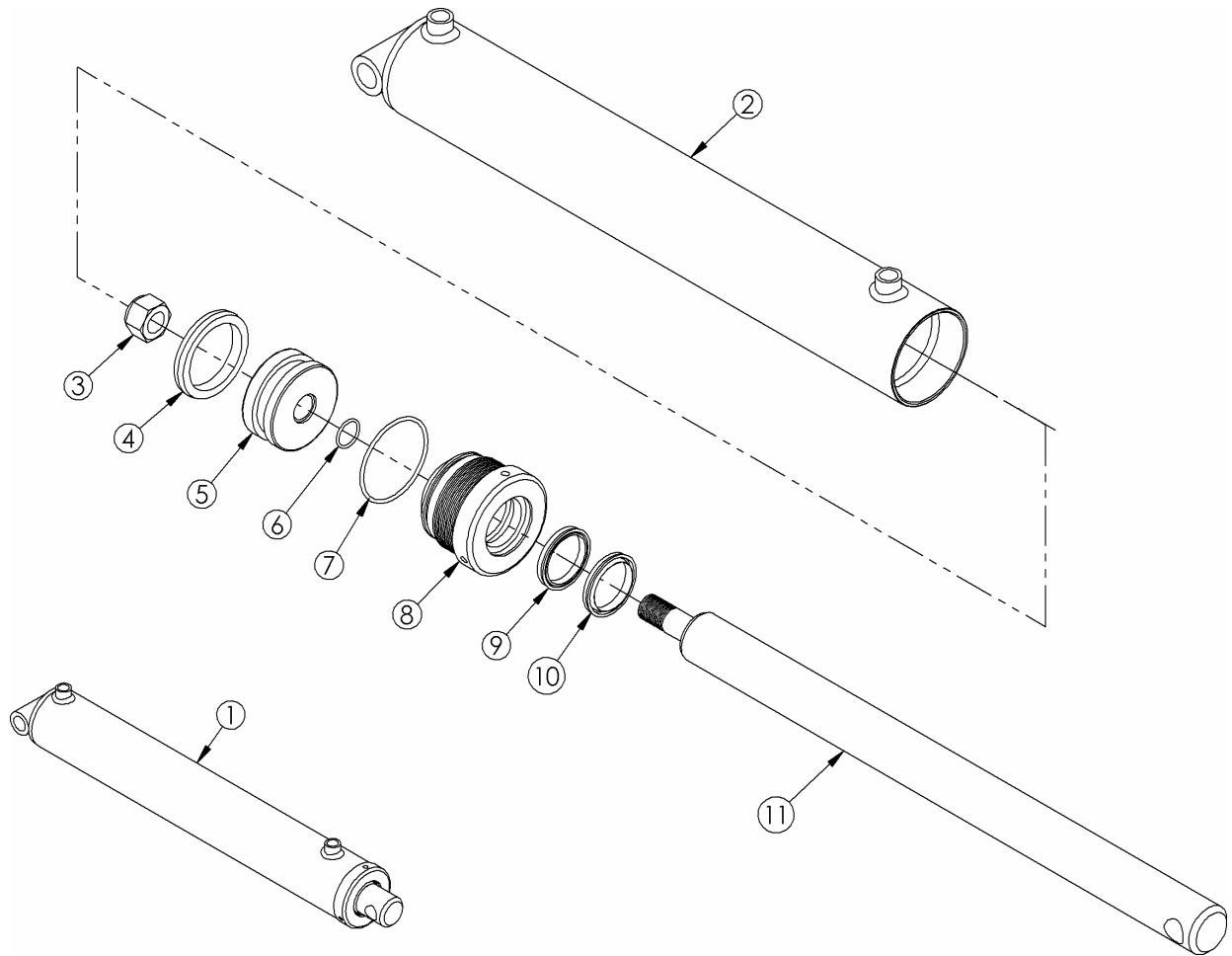
Hydraulic Ram – V3



Item	Giltrap Part #	Description	Quantity Used
1	RAMWS	Complete Ram Assembly	1
2	600-0910	Ram Cylinder	1
3	NNF1x14TPI	Nut, Nyloc 1x14 TPI	1
4	SLLS350AWR	Seal, Double Acting 3x3-1/2	1
5	600-1015	Piston, 3-1/2" (older types were 2 pieces)	1
6	OR120	O-Ring 1x3/32	1
7	OR238	O-Ring 3-1/2x1/8	1
8	600-0794	Retaining Head, Threaded	1
9	SLU2-1/2X2	Seal, Pressure 2x2-1/2x3/8 U Ring	1
10	SLW62-200	Seal, Wiper 2" Wyclip	1
11	600-1022	Shaft, 2"	1
-	SLKWS-3	Seal Kit (Contains #4, #6, #7, #9, #10)	1

Note: Version 3 parts will interchange with version 4.

Hydraulic Ram – V4



Item	Giltrap Part #	Description	Quantity Used
1	RAMWS	Complete Ram Assembly	1
2	600-0910	Ram Cylinder	1
3	NNF1x14TPI	Nut, Nyloc 1x14 TPI	1
4	SLLS350AWR	Seal, Double Acting 3x3-1/2	1
5	600-1015	Piston, 3-1/2"	1
6	OR120	O-Ring 1x3/32	1
7	OR238	O-Ring 3-1/2x1/8	1
8	600-0794	Retaining Head, Threaded	1
9	SLU2-1/2X2	Seal, Pressure 2x2-1/2x3/8 U Ring	1
10	SLW62-200	Seal, Wiper 2" Wyclip	1
11	600-1022	Shaft, 2"	1
-	SLKWS-3	Seal Kit (Contains #4, #6, #7, #9, #10)	1

Note: Version 4 parts will interchange with version 3.



Hydraulic Ram – V5 (Hustler)

Information available soon.