



Hydraulic Wood Splitter

Operating Manual



Part Number: 595-0016

Giltrap Engineering Ltd
P.O. Box 83
7 Main North Rd
Otorohanga, New Zealand
Phone: +64 7 873 7199
Fax: +64 7 873 8131
Email: info@giltrapeng.co.nz
Website: www.giltrapag.co.nz



Disclaimer

Although every endeavour has been made to compile as near to complete records as possible for the machine described, it is possible some information is incomplete or missing.

Giltrap Engineering request that you treat this book as a guide only, and offer any assistance necessary to procure the information or part you may require.

For parts or service enquires, please contact the applicable numbers on the previous page.

First Edition printed September 2002
Second Edition amended and reprinted November 2006

Copyright © 2006 by Giltrap Engineering Ltd.
Printed in New Zealand

All rights reserved. Reproduction or use, without express permission, of editorial or pictorial content, in any manner, is prohibited.



Table of Contents

INTRODUCTION	4
DELIVERY	4
WARRANTY	5
INSTALLATION.....	6
MAINTENANCE.....	6
GENERAL SAFETY	7
WOOD SPLITTER ASSEMBLY.....	8
HYDRAULIC PLUMBING	10
HYDRAULIC CONTROL VALVE.....	11
HYDRAULIC RAM	12



Introduction

Thank you for purchasing a *Giltrap* product. *Giltrap Engineering Ltd* has enjoyed a long-standing success with their machinery. We would like you to enjoy the benefits of owning a *Giltrap* too. By following the guidelines laid out in this book, you will ensure trouble free, low maintenance operating for years.

Giltrap Engineering Ltd is a progressive company which continually strives to satisfy your needs, so we welcome any feedback which you can provide to help us improve our products and services and to ensure that they perform to your expectations. Any constructive comments about this operator's manual are also welcome.

Your machine has been designed to perform its task efficiently and with a minimum of maintenance. This handbook provides safety guidelines, instructions, maintenance requirements and parts listings. We recommend that you read the entire handbook, before operating the machine as this will enable you to take full advantage of your new machine's considerable potential.

Delivery

Before you begin to use your machine, please check it to make sure there is no delivery damage. If damage is evident, contact the dealer who supplied the machine so that they can make the appropriate claims.

If you have any other queries, please contact your dealer or *Giltrap Engineering Ltd* (0800 80 GILTRAP).

All *Giltrap* products are covered by a 12-month warranty on parts and labour, subject to normal use.

Please fill in the details below for future reference.

Model:

Serial No:

Delivery Date:

Dealer:

Warranty

Subject as hereunder provided, Giltrap Engineering Limited (Hereafter called the Seller) undertake to correct either by repair, or at their election, by replacement, any defect of material or workmanship which occurs in any of its goods within twelve months after delivery of such goods to a first user, with the exception of contractors or commercial users when warranty period is six months.

The term goods when used in this document means the article or articles described in invoice as sold by the Seller but does not include equipment or proprietary parts or accessories not manufactured by the Seller. The Seller, however, undertakes to pass on so far as they legally can to the first user the benefit of any warranty given to the Seller by the suppliers of such equipment, parts or accessories.

This understanding shall not apply to:

- Any goods which have been sold by the first user.
- Any goods which have been damaged by unfair wear and tear, neglect or improper use.
- Any goods the identification marks of which have been altered or removed.
- Any goods, which have not received maintenance as, set out in this book also such basic normal maintenance such as tightening of bolts, nuts, hose connections and fittings and normal lubrication with the recommended lubricant.
- Any goods which have been altered or repaired other than on instruction or with the written approval of the Seller or to which any part not manufactured or having written approval by the Seller has been fixed.
- Any second-hand goods or part thereof.

Any allegedly defective part or parts returned to the Seller must be sent freight paid. No claim for repair or replacement will be entertained unless, upon discovery of the alleged defect written notification is sent to the Seller, giving at the same time, the name of the Buyer from whom the goods were purchased and the date of purchase, together with full details of the alleged defect and the circumstances involved, also the serial number of the machine etc.

The Seller shall not be under liability to their Buyers and first and subsequent users of their goods or to any other person or persons for loss or damages howsoever arising in respect of either personal injuries or for special or consequential damage of any kind or from any cause whatsoever arising out of, or in any way connected with or arising from the manufacture, sale, handling, repair, maintenance, replacement or use of its goods or the failure or malfunction of any of its goods. Representation and/or warranties made by any person (including Buyers and employees and other representatives of the Seller) which are inconsistent or conflicting with these conditions are not binding upon the Seller unless given in writing and signed by a Director of the Seller.

Claims

If you wish to make a claim under warranty:

- Immediately stop using the machine.
- List details of the machine and damaged item including serial numbers and date of purchase.
- Consult with your Giltrap dealer (supplier) and have him forward your claim and the damaged item to Giltrap Engineering Ltd.
- No warranty to be undertaken unless an order number is obtained from the Seller (Giltrap Engineering Ltd) prior to any work being done.



Installation

- Mount the wood splitter to the tractor linkage arms.
- Operate the wood splitter at the correct height where possible for comfortable posture.

Maintenance

- Grease the ram mounting pins occasionally to prevent seizure.
- Check the valve assembly for correct relief and detent pressure.
- Remove shims from the slide assembly if/when it develops excessive movement.

General Safety

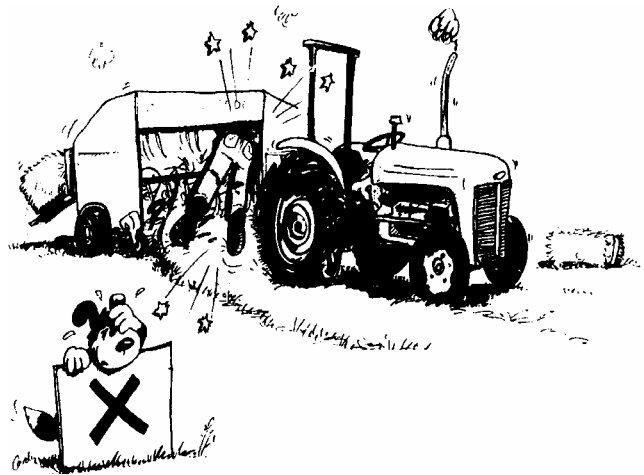
For the safety of others and yourself, please read and follow the precautions in this operator's manual. Pay particular attention to the following safety aspects of operating machinery.

Do not ride on or allow passengers on the machine.



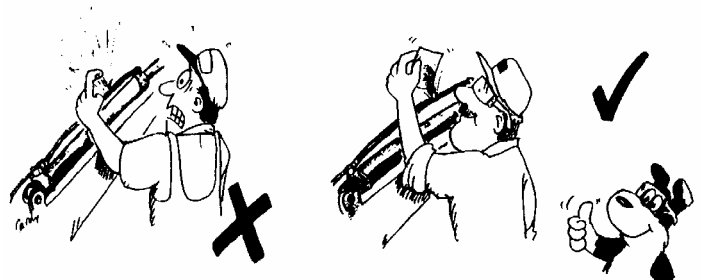
Never attempt to unblock equipment while it is still operating.

Always disengage power take-off, hydraulics and shut down engine before removing materials, checking or servicing. Failure to follow these precautions is likely to result in serious injury.

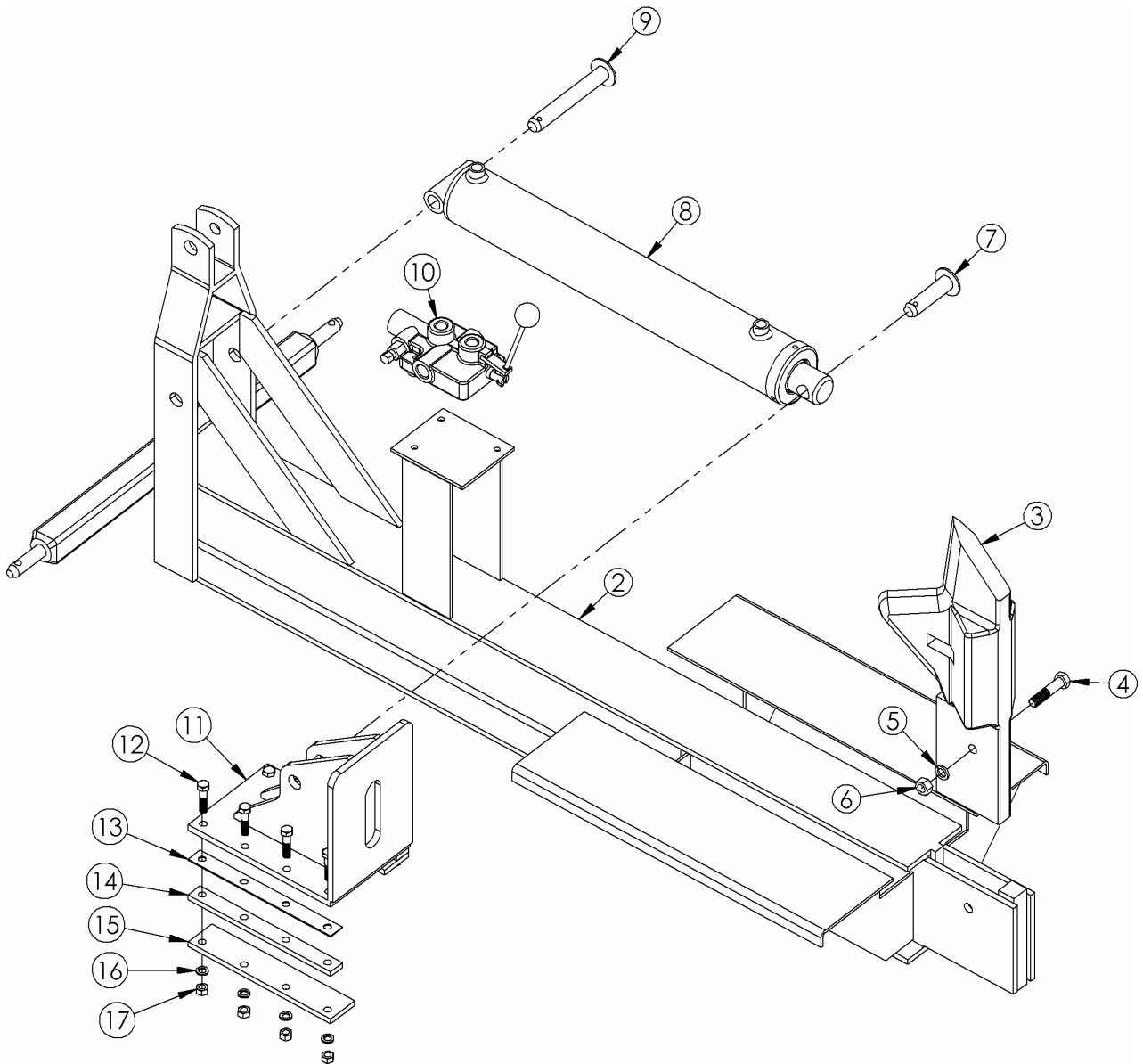


Release all hydraulic pressure from implements before commencing service work. Never look for suspected oil leaks with your hands or body - use a piece of cardboard instead.

Any fluid which penetrates the skin will have to be removed immediately by a medical expert. Seek specialist advice on this type of injury.



Wood Splitter Assembly





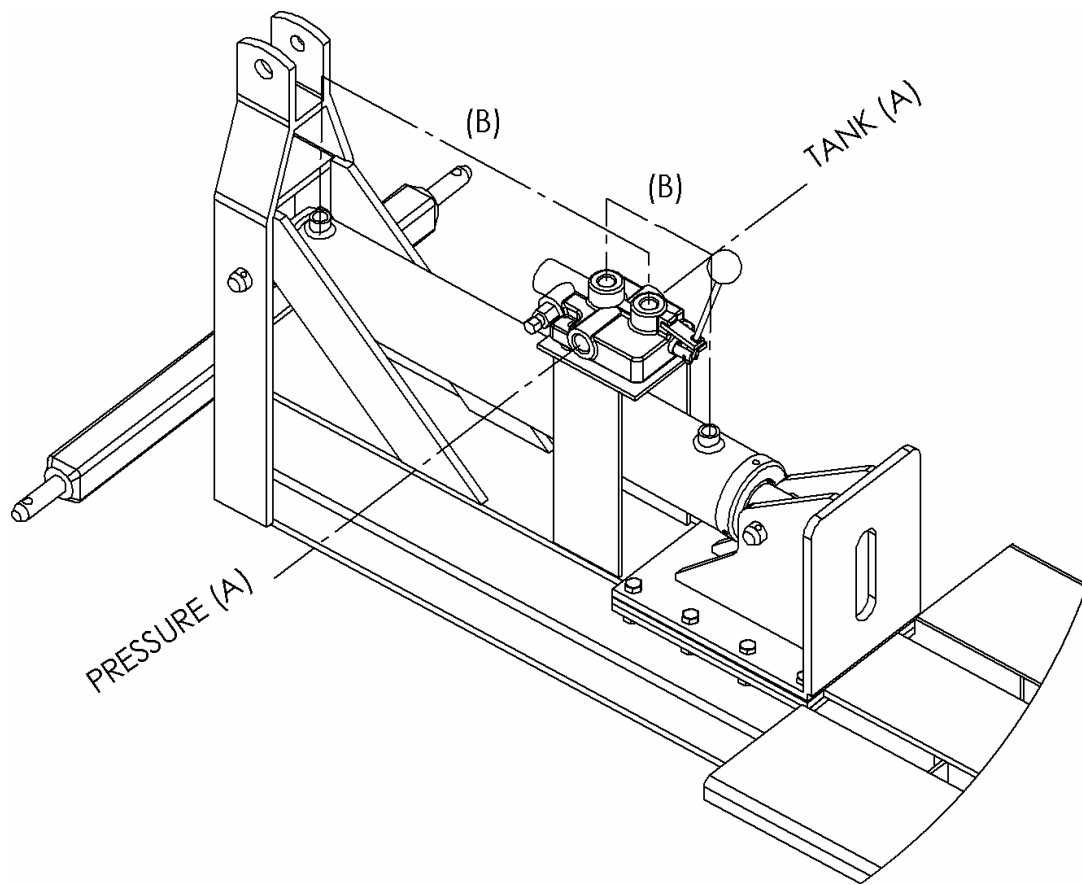
Wood Splitter Assembly

Item	Giltrap Part #	Description	Quantity Used
1	WSHY	Complete Assembly	1
2	WSHYB	Chassis	1
3	WSK	Splitting Knife (not available separately)	1
4	B16x70	Bolt, M16x70	1
5	WASG16	Washer, Spring M16	1
6	N16	Nut, M16	1
7	900-0116	Pin, Slide 25mm	1
8	RAMWS	Hydraulic Ram, Double Acting	1
9	900-0115	Pin, Ram Base Mount 25mm	1
10	WSVPT	Hydraulic Control Valve	1
11	WSHYS	Slide Plate	2
12	B12x50	Bolt, M12x50	8
13	WSSHIM	Slide Spacer Shim	2
14	WSSPACER	Slide Spacer	2
15	WSLSL	Slide Lower Slide Plate	2
16	WASG12	Washer, Spring M12	8
17	N12	Nut, M12	8

Control valve parts available separately

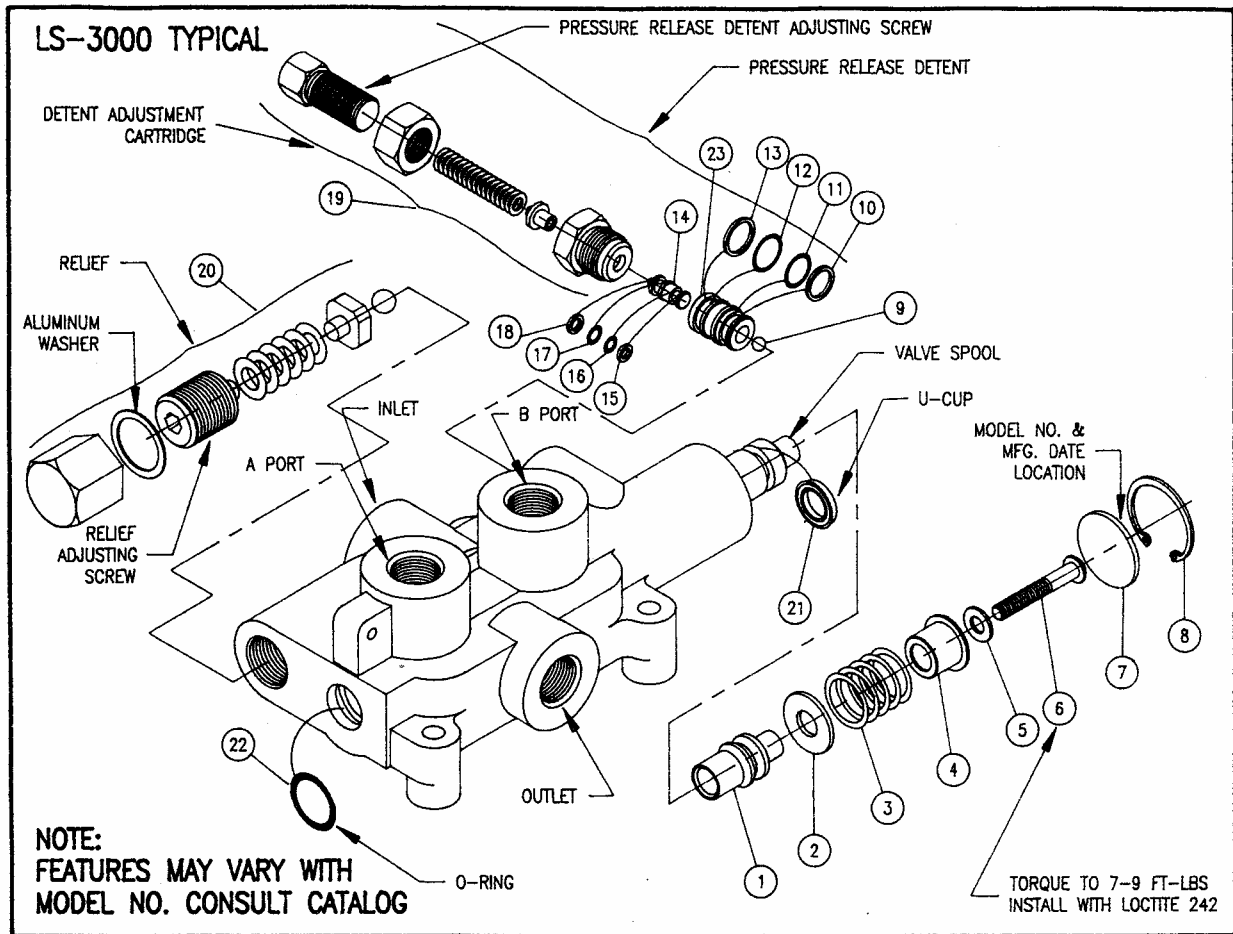
-	HYC1BDA-H	Handle	1
-	HYC1BDA-HK	Handle Kit	1

Hydraulic Plumbing



Hose #	Giltrap Part #	Description	Quantity
A	450-1794	Tractor to valve	2
B	450-1787	Valve to ram	2

Hydraulic Control Valve



PLEASE NOTE:
BEFORE REMOVING VALVE SPOOL OR SPOOL SLEEVE REMOVE DETENT ADJUSTING CART., DETENT PISTON AND STEEL BALL. INSTALL SPOOL AND SPOOL SLEEVE BEFORE REINSTALLING STEEL BALL.

LS-3000 KITS AND CARTRIDGES

PRESSURE RELEASE DETENT
This feature provides a pressure release detent for the spool 'out' (handle in) position. When the spool is manually placed in the detent position oil is directed to the 'B' work port (the port away from the handle). When the pressure in the 'B' port reaches a preset level the detent will release and the spool will center. The factory setting is 1400 psi. The detent release pressure is adjustable by loosening the jam nut and turning the adjusting screw. Turning the adjusting screw clockwise will increase the detent release pressure and counterclockwise will decrease the detent release pressure. NOTE: if the detent release pressure is set too high the spool will not center, if the pressure is too low the detent will not hold. If cap screw item 6 becomes loose detent will not function properly.

RELIEF VALVE
An adjustable ball spring relief valve is standard on all LS-3000 valves. The standard factory setting is 2250 psi @ 3 gpm and 120°F. Other settings can be specified. The relief pressure is adjusted by removing acorn nut, and turning the adjusting screw. Turning the adjusting screw clockwise will increase the pressure and counterclockwise will decrease the pressure (a pressure gauge must be installed in the inlet line whenever the relief pressure is adjusted). Do not backout adjusting screw to the point it falls out.

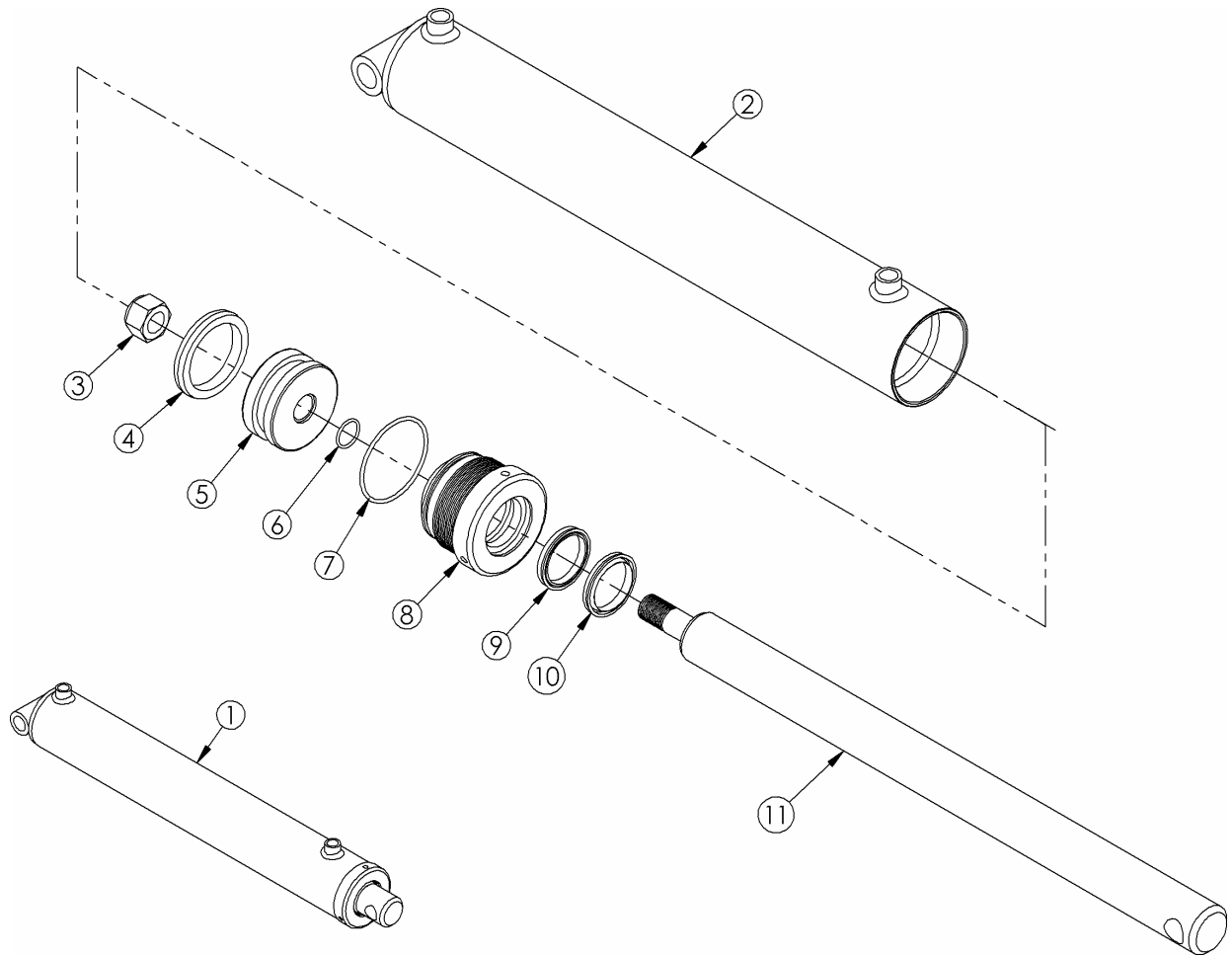
WARNING: OVERPRESSURE MAY CAUSE SUDDEN AND UNEXPECTED FAILURE OF A COMPONENT IN THE HYDRAULIC SYSTEM RESULTING IN SERIOUS PERSONAL INJURY. ALWAYS USE A GAUGE WHEN ADJUSTING A RELIEF VALVE.

ITEM	QTY	PART NO.	DESCRIPTION
1	1	670700019	DETENT SLEEVE
2	1	670500033	WASHER
3	1	670300020	SPRING
4	1	671400010	STOP CUP
5	1	670500026	WASHER
6	1	220000953	CAP SCREW
7	1	670500032	SPACER
8	1	230001125	SNAP RING
9	1	230009009	STEEL BALL
10	1	240019013	BACK-UP WASHER
11	1	240000013	O-RING
12	1	240000014	O-RING
13	1	240019014	BACK-UP WASHER
14	1	671100011	PISTON
15	1	240019007	BACK-UP WASHER
16	1	240016067	O-RING
17	1	240016068	O-RING
18	1	240019008	BACK-UP WASHER
19	1	660330002	DETENT ADJUSTING CART.
20	1	660125004	RELIEF KIT
21	1	240016086	U-CUP
22	1	2400000210	O-RING
23	1	671100012	PISTON SLEEVE
		660530001	LS-3000 SEAL KIT
		660125004	RELIEF KIT
		660330002	DETENT ADJUSTING CART.
		660130007	PRESSURE RELEASE DETENT KIT
		660130001	COMPLETE HANDLE KIT

11-22-95 REVISION 2

672100002

Hydraulic Ram



Item	Giltrap Part #	Description	Quantity Used
1	RAMWS	Complete Ram Assembly	1
2	600-0910	Ram Cylinder	1
3	NNF1x14TPI	Nut, Nyloc 1x14 TPI	1
4	SLLS350AWR	Seal, Double Acting 3x3-1/2	1
5	600-1015	Piston, 3-1/2"	1
6	OR120	O-Ring 1x3/32	1
7	OR238	O-Ring 3-1/2x1/8	1
8	600-0794	Retaining Head, Threaded	1
9	SLU2-1/2X2	Seal, Pressure 2x2-1/2x3/8 U Ring	1
10	SLW62-200	Seal, Wiper 2" Wyclip	1
11	600-1022	Shaft, 2"	1
-	SLKWS-3	Seal Kit (Contains #4, #6, #7, #9, #10)	1