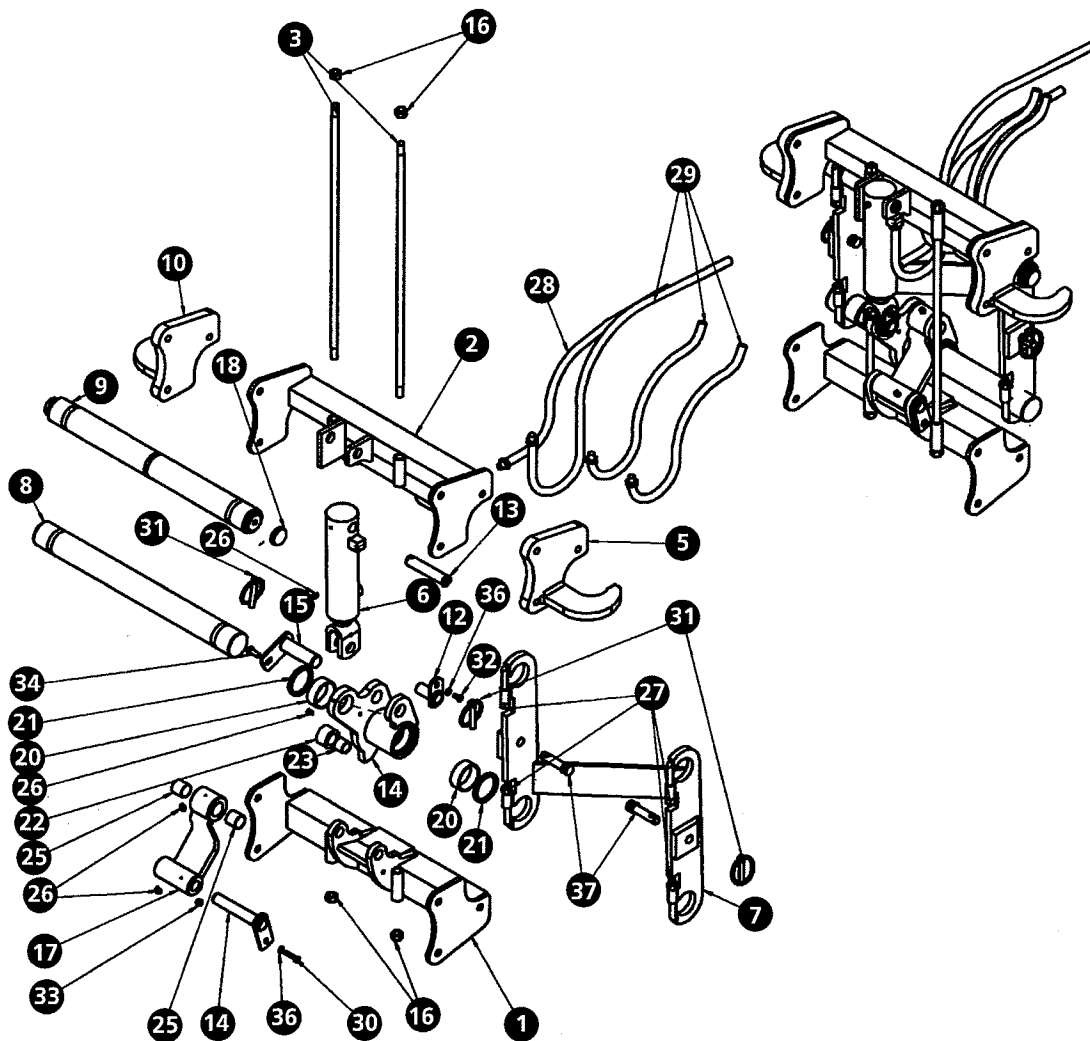


# IMAX T S ASSEMBLY



## IMAX T S ASSEMBLY (Tilt and side shift)

Item No	Description	Qty Per M/C	Part Code	Drg No.	Item No	Description	Qty Per M/C	Part Code	Drg No.
1	Lower Brace	1	F - 505	7400	20	Wear Rings 2½ X 2¾ X 1"	6	F - 524	5973
2	Upper Brace	1	F - 506	7401	21	Wyclip Wiper 2½"	6	F - 523	5972
3	Tie Rod	2	F - 507	4339	22	Spherical Ball Sleeve	1	F - 520	4572
4	Toggle Housing	1	F - 508		23	Spherical Ball	1	F - 521	4729
5	SS Wing LH	1	F - 516	7405	24	Tilt Ram Seal Kit	1	SK250125	250125
6	Tilt Cylinder	1	F - 510		25	Dog Bone Bush	2	F - 525	4728
7	Z-Frame	1	F - 511	7403	26	¼ UNF Grease Nipple	5	CH - 230	
8	Chrome Bar	1	F - 529	4508	27	M14 X 2 Nut	4	F - 528	
9	Side Shift Ram	1	F - 513	6650	28	Hose 1300L - ¼ QRC	1	F - 526	
10	SS Wing RH	1	F - 515	7406	29	Hose 1200L - ¼ QRC	3	F - 527	
12	Tilt Clevis Pin	1	F - 517	4552	30	M8 X 35 Bolt	1	F - 534	
13	Tilt Ram Base Pin	1	F - 536		31	AG - 3 Lynch Pin	3	CH - 500	
14	Link Pivot Pin	1	F - 518	4554	32	M8 X 15 Bolt	1	F - 624	
15	Link Pin	1	F - 519	4555	33	M8 Nyloc Nut	1	CH - 218	
16	5/8 UNF Nylock Nut	4	F - 558	5945	34	M10 X 25 Bolt	1	F - 535	
17	Dog Bone	1	F - 509	7404	35	M10 Washer	1	CH - 222	
18	Wear Pad (Nylon)	2	F - 533	4767	36	M8 Washer	2	CH - 223	
19	Side Shift Seal Kit (incl. Bushes)	2	F - 514		37	Fixing Pin B2747	2	F - 537	