

SUB-ASSEMBLIES

SUB-Assy	Description	Notes
O1	Mainframe	
O2	Platform	
O3	Drum	
O4	3PTL Frame	
O5	Wiper	

SPECIFICATIONS

- 1) CHAINLESS 2000 WEIGHT: 490 kg empty
- 2) BALE CAPACITY: 1 X 1000 kg bales. Up to 6' round bale and 8' long square bale (with the optional extension bar)
- 3) TRACTOR SIZE: Large enough to safely handle the bale feeder and 1 bale (1000 kg maximum bale capacity).
- 4) HYDRAULIC REQUIREMENTS: Pressure: 2250 - 3000 PSI. Flow: 12 - 60 L/min. **We recommend restricting flow to 25 L/min MAXIMUM.** 2 X sets of double acting hydraulics remotes.
- 5) HOSE CONNECTIONS: 2 hoses to inside lever which operates platform.
2 hoses to outside lever which operates rotors.

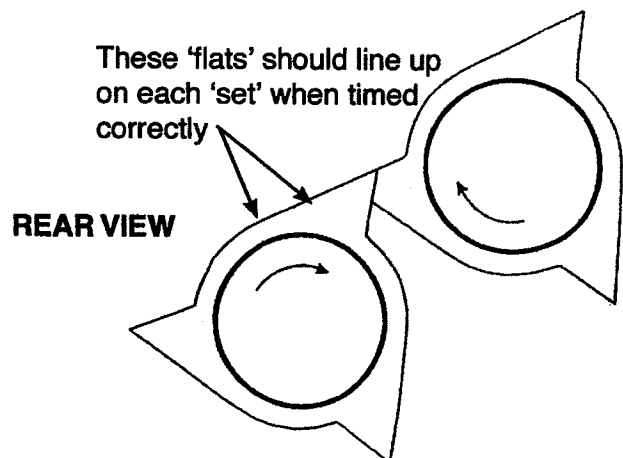
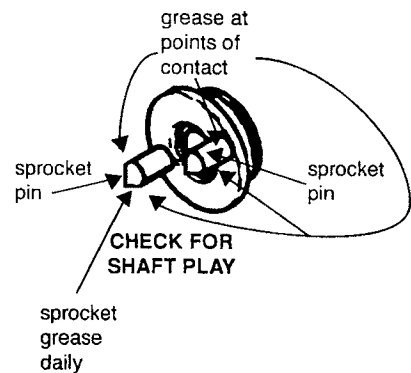
WARNING!

BEFORE ATTEMPTING ANY MAINTENANCE, ENSURE TRACTOR ENGINE IS SHUT OFF AND NO ONE IS NEAR THE HYDRAULIC CONTROLS.

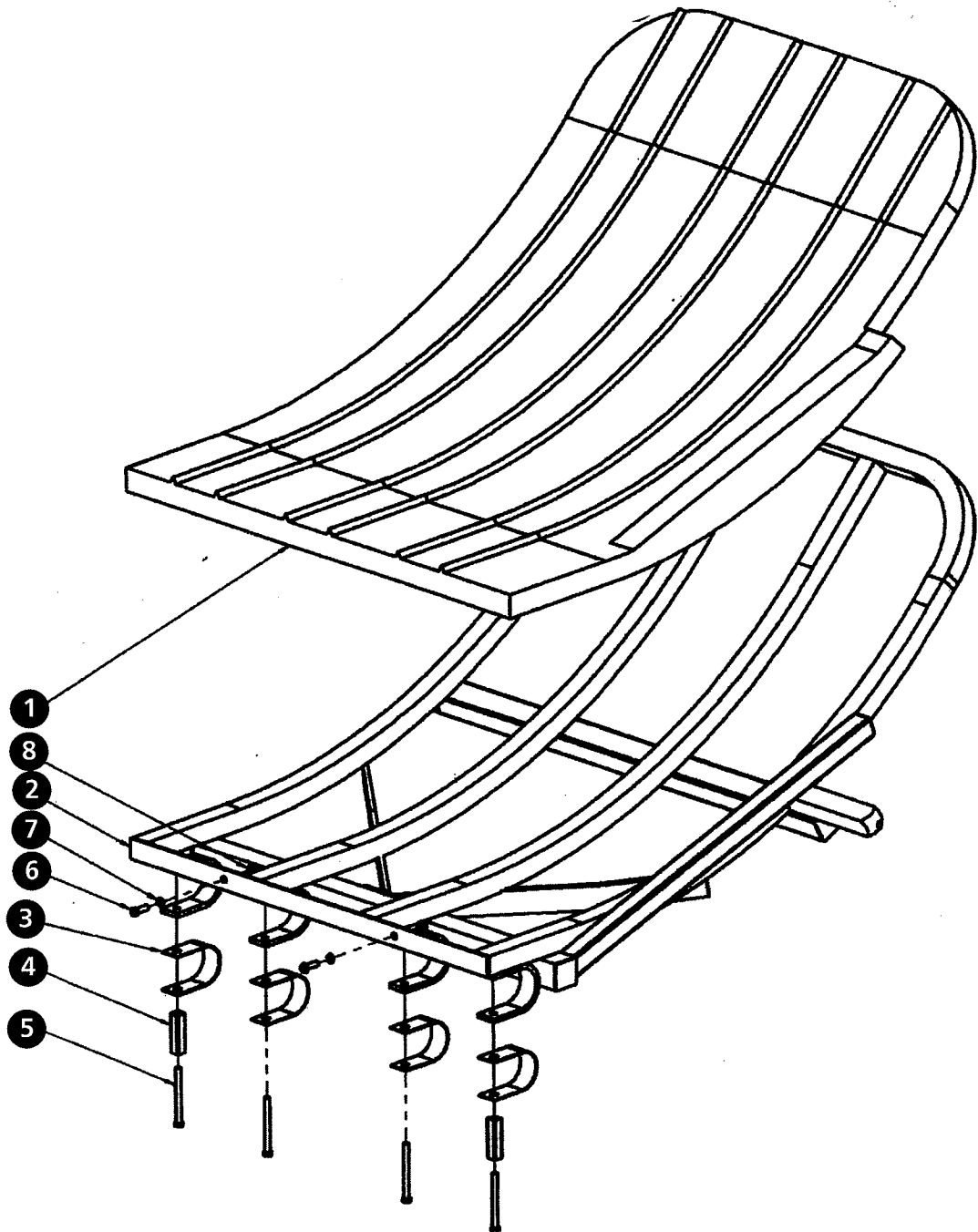
MAINTENANCE

(Also do this before initial operation)

- Grease the 8 grease points - especially drive sprockets, drive and pins - regularly. Use a minimal amount of grease.
- Keep the chains oiled. Use a non-tacky black or brown chain lube regularly.
- If the machine is not to be used for a long period of time, spray the ram shaft with CRC Soft Seal or similar to protect against rust.
- After the first 10 hours of operation and during routine servicing ensure that grubscrews and bolts are tight. Check operation of the safety latch.
- If rear chain is replaced or removed, ensure feed drums are timed correctly, as shown;



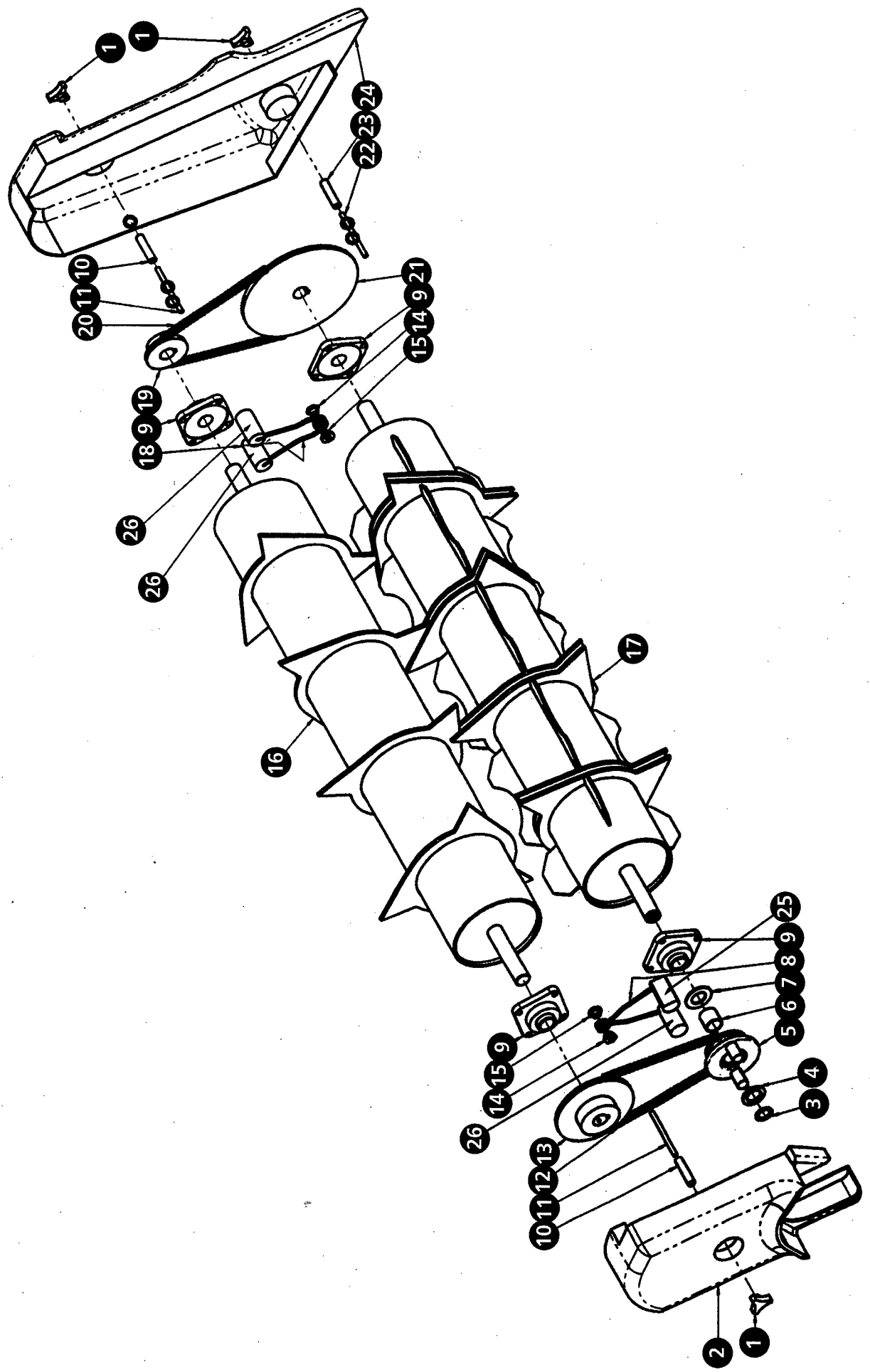
PLATFORM ASSEMBLY 02



SUB-ASSEMBLY 02

Item No.	Description	Qty	Part Code	Notes
1	Plastic Platform	1	CH - 195	
2	Platform Frame SA12	1	CH - 14	
3	UHMW Wear Strip	4	CH - 56	
4	RHS Spacer	2	CH - 55	
5	Bolt M12 X 140mm	4	CH - 208	
6	Bolt M12 X 35mm	2	CH - 210	
7	M12 Washer	2	CH - 221	
8	M12 Nyloc Nut	2	CH - 216	

DRUM ASSEMBLY 03



SUB-ASSEMBLY O3

Item No.	Description	Qty	Part Code
1	Triknob	3	CH - 149
2	Front Cover	1	CH - 150
3	Circlip 1 3/8" External Heavy Series	1	CH - 160
4	Washer 1 3/8" Flat X 3mm	1	CH - 157
5	Drive Sprocket	1	CH - 126
6	Drive Sprocket Bush	1	CH - 131
7	Hardened Washer 1 3/8"	1	CH - 132
8	Front Tensioner Spring only (goes outside chain)	1	CH - 113A
9	4 Bolt Flange Bearing	4	CH - 152-153
10	Cover Spacers X 75mm	2	CH - 77
11	Threaded Rod Stud X 135mm	2	CH - 89
12	Front Chain (short)	1	CH - 142
13	Sprocket 30 Tooth	1	CH - 147
14	Tensioner Retaining Nut	2	CH - 112A
15	Tensioner Spacer	2	CH - 112
16	Top Drum SA8T	1	CH - 8
17	Bottom Drum SA6B	1	CH - 10
18	Rear Tensioner Spring only (goes inside chain)	1	CH - 113
19	Sprocket 15 Tooth	1	CH - 146
20	Rear Chain (long)	1	CH - 141
21	Sprocket 45 Tooth	1	CH - 148
22	Threaded Rod Stud X 95mm	1	CH - 88
23	Cover Spacer X 40 mm	1	CH - 76
24	Rear Cover	1	CH - 151
25	Plastic tensioner block half-type	1	CH - 115
26	Plastic tensioner block full-type	3	CH - 114

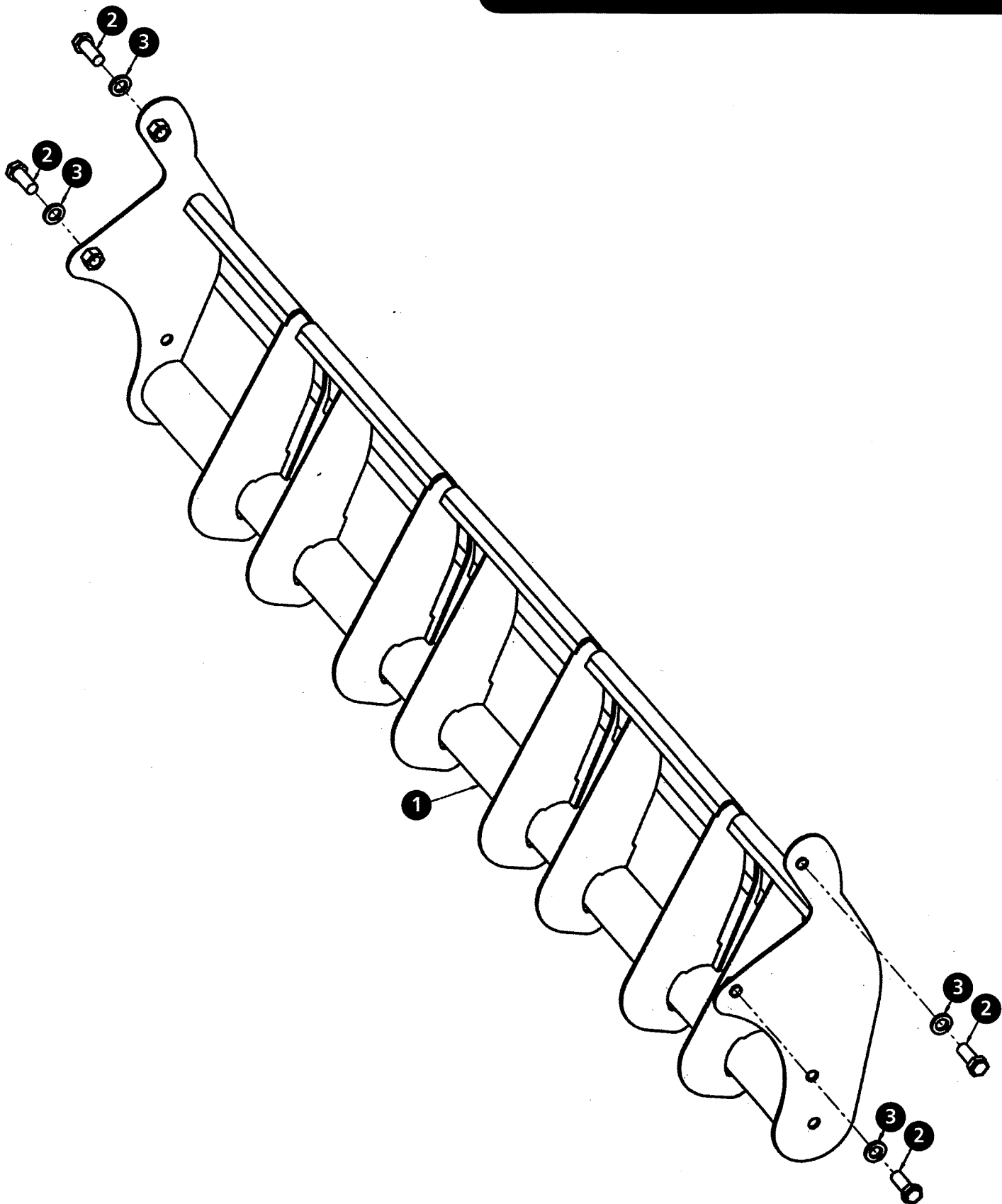
ITEMS NOT SHOWN

Part Code	Qty Per Mach.	Description
CH - 143	2	Joining Link 12B
CH - 125	2	Motor Tee Grub Screw
CH - 129	1	Motor Key 1/4" X 1"
CH - 161	6	Sprocket Grub Screw (2 Per sprocket)
CH - 154	3	Sprocket Key
CH - 210	16	Bolt M12 X 35mm (4 Per Bearing)
CH - 216	16	M12 Nyloc Nut (4 per Bearing)
CH - 217	8	Nut M10 for Cover Spacer & Stud
CH - 222	2	M10 Washer for Bottom Rear Cover Spacer & Stud
CH - 210	2	Bolt M12 X 35mm for HYD Motor Mount
CH - 216	2	M12 Nyloc Nut for HYD Motor Mount
CH - 156	1	Plastic Block for Motor Mount

SUB-ASSEMBLY O4

Item No.	Description	Qty	Part Code	Notes
1	3 Point Linkage Frame SA5	1	CH - 5	
2	Safety Latch	1	CH - 107	
3	Torque Arm SA1	1	CH - 1	
4	Pin 1" X 120mm	1	CH - 137	
5	Pin 1" X 104mm	1	CH - 138	
6	Platform Cylinder	1	CH - 163	
7	Pin 1" X 97mm	1	CH - 139	
8	Hydraulic Motor BG 400	1	CH - 166	
9	Bolt M12 X 35mm	2	CH - 210	
10	M8 Washer	3	CH - 223	
11	M12 Nyloc Nut	3	CH - 216	
13	Bolt M8 X 30mm	3	CH - 213	
14	AG-3 Clip	2	CH - 500	
15	M10 Nut	1	CH - 127	
16	Safety Latch Spring #5277	1	CH - 110	
17	Bolt M10 X 40mm	1	CH - 211	
18	Split Pin	1	CH - 227	
19	1" ZP Washer	1	CH - 220	
20	Tee Drive #CH-DDA	1	CH - 128	
21	Hook Latch	1	CH - 30	
22	Motor Key 1/4" X 1"	1	CH - 129	
23	Motor Tee Grubscrew	2	CH - 125	
24	M8 Nyloc Nut	3	CH - 218	
25	Hook Latch Rope	1	CH - 167	
26	1/8 BSP Grease Nipple	1	CH - 228	
27	Latch Spring	1	CH - 192	
	Toplink AG pin B76	1	S - 405	Not Shown
	1" ZP Heavy Washer	2	CH - 235	Not Shown
	AG3 Lynch Pin	1	CH - 500	Not Shown

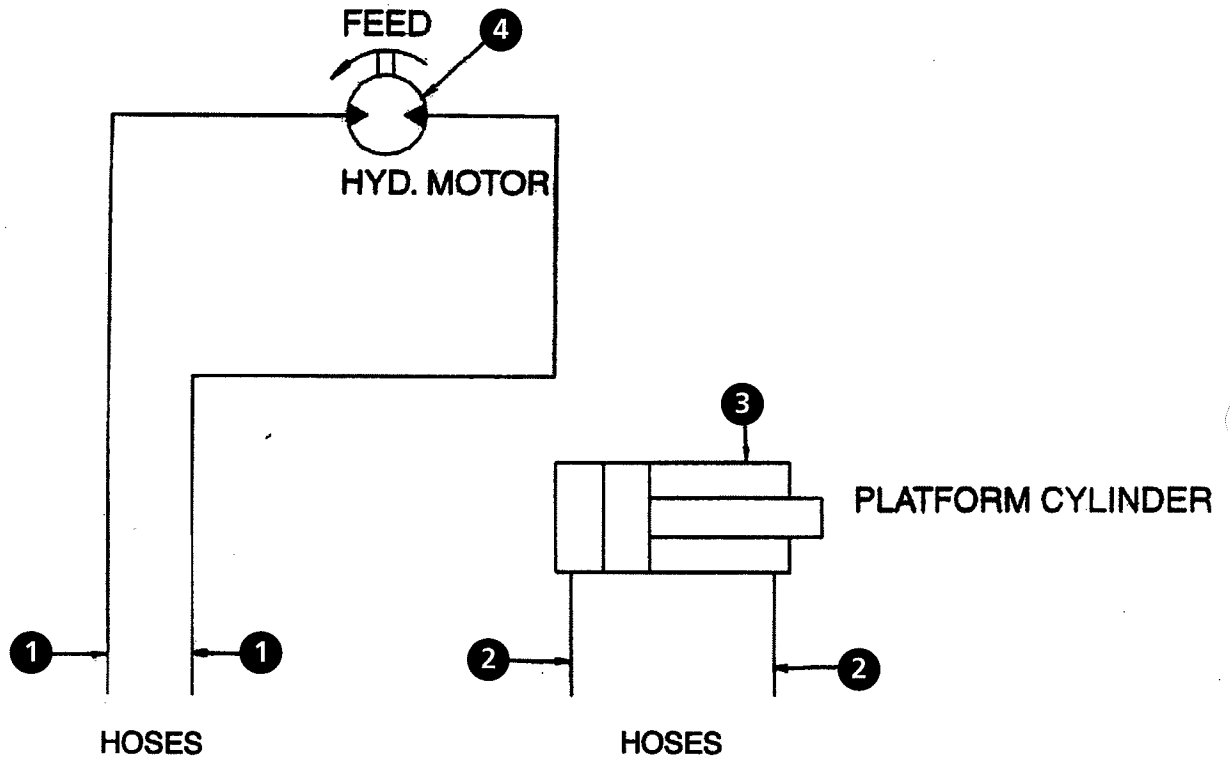
WIPER ASSEMBLY 05



SUB-ASSEMBLY 05

Item No.	Description	Qty	Part Code	Notes
1	Wiper Panel SA7'	1	CH - 7	Freeflow' Style
2	Bolt M12 X 35mm	4	CH - 210	
3	M12 Washer	4	CH - 221	

HYDRAULIC COMPONENTS



Item No.	Description	Qty	Part Code	Notes
1	Tractor to Motor Hose HK1-2375	2	CH - 20	
2	Tractor to Ram Hose HK2-2376	2	CH - 21	
3	Platform Cylinder	1	CH - 163	
	Platform Cylinder Seal Kit	1	SK250150	
4	Hydraulic Motor BG400	1	CH - 166	
	Hydraulic Motor Seal Kit BG400	1	CH - 166SK	
	Hydraulic Motor Key 1/4" X 1"	1	CH - 129	

Touch Feed Kit

Allows machine to be operated by one simple joystick
(includes custom designed 12v electric solinoid, electric wiring, joystick & fitting instructions)

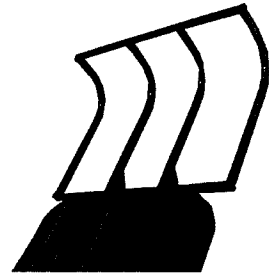
Order Code: CHTF



Bale Extension Kit

Bolts onto the platform to allow 8' bales to be fed out.
(includes extension bars, brackets & fitting instructions)

Order Code: CHEXTBAR



String Box

For storing bale strings and netting
(includes brackets & fitting instructions)

Order Code: CH2SB

